

RESOLUTION OF THE *ELAPHRIA FESTIVOIDES* (GUENÉE) SPECIES COMPLEX (LEPIDOPTERA: NOCTUIDAE)

SANDRA V. SALUKE AND MICHAEL G. POGUE

(SVS) Department of Entomology, National Museum of Natural History, Smithsonian Institution, Washington, DC 20560-0127, USA; (MGP) Systematic Entomology Laboratory, PSI, Agricultural Research Service, U.S. Department of Agriculture, % National Museum of Natural History, Smithsonian Institution, Washington, DC 20560-0168, USA (e-mail: mpogue@sel.barc.usda.gov)

Abstract.—A new species, *Elaphria cornutinis*, of the *Elaphria festivoides* Guenée species complex is described and illustrated. *E. festivoides* is redescribed and variation within the species discussed. *Elaphria cornutinis* can be distinguished from *E. festivoides* by the darker ground color of the forewing and more distinct orbicular and claviform spots. The male has an abdominal hair pencil, a gradually narrowing valve, and a narrower uncus than in that of *E. festivoides*. *Elaphria festivoides* is widely distributed from southern Canada to southern Texas and Florida, west to eastern British Columbia, Colorado, and New Mexico. *Elaphria cornutinis* overlaps the distribution of *E. festivoides* from Maryland south to Alabama and west to Oklahoma and Missouri. A total of 796 specimens were studied, with 41 specimens of *E. festivoides* and 15 specimens of *E. cornutinis* dissected for genitalic examination.

Key Words: *Elaphria cornutinis*, *Elaphria festivoides* taxonomy, distribution

Elaphria festivoides (Guenée 1852) is a North American noctuid moth belonging to the Subfamily Hadeninae (Kitching and Rawlins 1999). *Elaphria festivoides* was found to be a complex of two closely related sibling species. The purpose of this paper is to present characters that can differentiate between species of the *E. festivoides* complex.

Smith (1889) revised the *Elaphria* of North America and made dissections of the male genitalia. His illustration of the male valve agrees with our concept of *E. festivoides*. In their treatment of the owl moths of Ohio, Rings et al. (1992) discussed two species, *E. festivoides* and a new one related to *E. festivoides*. They explained the characters that separate these two species. They also discussed a third spe-

cies from Florida as illustrated in Kimball (1965). After doing numerous dissections we concluded that these Florida and Texas specimens are a faded form of *E. festivoides*. Walker ([1858]1857) described this faded form as *Erastria varia*. In the revision of the noctuid genus *Cutina* Walker, specimens from Florida, southern Georgia, and some localities in Louisiana show intraspecific variation from the ones farther north (Pogue and Ferguson 1998).

MATERIALS AND METHODS

For this study, 796 specimens were examined from the collections of the American Museum of Natural History, New York, NY (AMNH); National Museum of Natural History, Smithsonian Institution, Washington, DC (USNM); Mississippi State Uni-

versity, Mississippi State, MS (MSU); the private collection of Bryant Mather, Clinton, MS (BM); and the private collection of Eric H. Metzler, Columbus, Ohio (EHM). Each of the specimens examined was given a unique bar code number (USNM ENT 00000000) and the data provided on the specimen label(s) were entered into a database that is maintained by the Department of Entomology, Smithsonian Institution, Washington, DC. Slides of both sexes were made in order to facilitate detailed comparison of genitalic structures.

Elaphria festivoidea (Guenée)

(Figs. 1–4, 9, 11–13, 17–18, 21–22, 25–26, 29)

Celaena festivoidea Guenée in Boisduval and Guenée 1852:220.

Erastria varia Walker [1858] 1857:808.—Draudt 1926:268.

Hadena cephalica Grote MS., in Butler 1891:241 (*nomen nudum*).

Oligia festivoidea: Smith 1889:147.—Butler 1891:240.—Smith 1891:43.—Dyar [1903]1902:112.

Monodes festivoidea: Hampson 1909:483.—Barnes and McDunnough 1917:68.—Draudt 1926:268.

Monodes festivoidea ab. *albovariegata* Strand 1916:162.—Draudt 1926:268.

Elaphria festivoidea: Kimball 1965:99.—Rockburne and Lafontaine 1976:83.—Franclemont and Todd 1983:141.—Covell 1984:135.—Poole 1989:351.—Rings et al. 1992:100.—Poole and Gentili 1996:739.

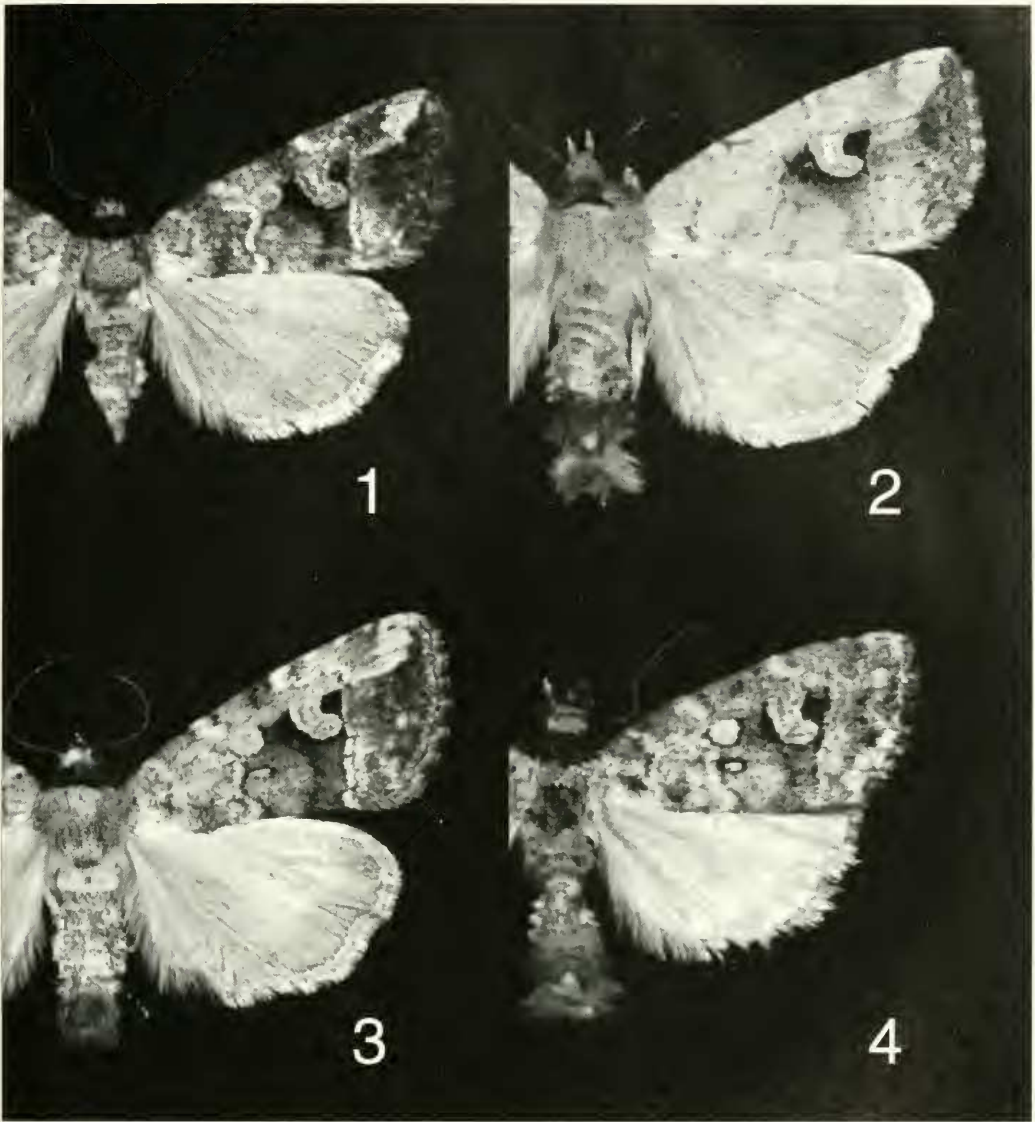
Diagnosis.—Differences are discussed in the diagnosis of *E. cornutinis*.

Description.—*Male*: *Head*: Labial palps cream with dark brown and rust colored laterally. Vertex cream with rust-colored tips on scales. Antennal scape white, medially mixed with cream and rust; flagellum orange, dark brown dorsally, especially at base. *Thorax*: Dorsum mixed white, cream, gray, and rust. Metanotum gray. Patagium

dominated by rust, with rings of cream, rust, and dark brown. Tegula cream, light gray, and pale rust. Prothoracic leg predominantly dark brown mixed with rust and cream, also with cream apical and faint anteapical tibial bands; tarsus gray with white apical bands. Mesothoracic leg mixed white, gray, cream, and rust with cream apical tibial bands; tarsus gray with white apical bands. Metathoracic leg mixed white, gray, cream, and rust with cream apical tibial bands; tarsus gray with white apical bands. Venter white. *Forewing*: Length 8.5–12 mm (n = 20). Ground color medium brown. Basal line dark brown proximally and white distally. Antemedial line white proximally, gray to black distally. Postmedial line black proximally and white distally. Subterminal line absent. Orbicular spot with pale rust and light brown center and cream outer ring. Claviform spot with cream center and black outer ring. Reniform spot crescent-shaped and wrapped around a black spot; with concentric rings of (outside to inside) cream, rust and light brown, and white. *Hindwing*: Ground color medium brown, fading to white proximally. *Abdomen*: Dorsum gray with white posterior margins; venter mixed gray and white; first abdominal sternite with rounded posterior margin; hair pencils absent. *Genitalia* (Figs. 11–13, 17–18): Uncus laterally wider in middle than at base. Valve narrow, apex pointed. Sacculus widest at base with an abrupt change in width about halfway along its length. Vesica with total number of cornuti between 19 and 32; 3 or 4 cornuti dorsal to the lateral diverticulum. *Female*: As in male except forewing length 9–12 mm (n = 20). *Genitalia* (Figs. 21–22, 25–26): Vento-lateral margin of 8th sternite above ostium bursae angled medially, forming a gap measuring 0.22–0.28 mm (mean = 0.24 mm, n = 5).

Type material.—Holotypes of *E. festivoidea* and *E. varia* in The Natural History Museum, London (BMNH).

Type locality.—*E. festivoidea*, Florida,



Figs. 1-4. Adults of *Elaphria festivoidea*. 1, ♂, 1 mi SSW of Bethany Ctr, New Haven Co., CT, 17 Jun 1967, D. C. Ferguson, USNMENT 00063095. 2, ♂, Univ. Conservation Resv., Welaka, Putnam Co., FL, 15 Mar 1962, D. C. Ferguson, USNMENT 00063135. 3, ♀ Slate Cr., 9 mi NW of Hill City, Black Hills, Pennington Co., SD, 4 Jul 1964, D. C. Ferguson, USNMENT 00063427. 4, ♂, South Branch, West Newfoundland, Newfoundland, Canada, 4 Jul 1949, H. Krogerus, USNMENT 00063277.

USA; *E. varia*, St. Johns Bluff, eastern Florida, USA.

Larval foodplant.—Box-elder (*Acer negundo* L.) Family: Aceraceae (Rockburne and Lafontaine 1976).

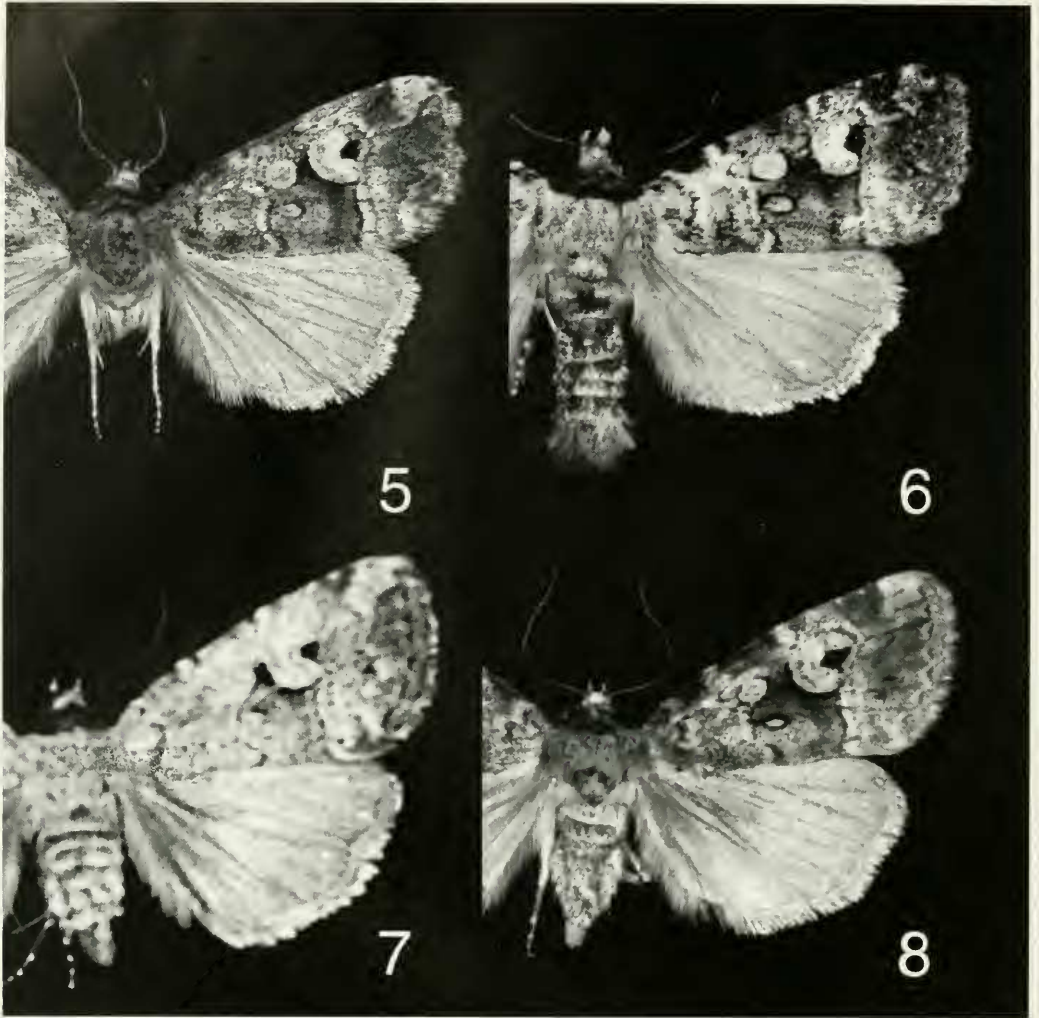
Flight period.—Records (n = 644) for mid-February to mid-October.

Distribution (Fig. 31).—From Florida

north to Newfoundland, and west to eastern British Columbia, North Dakota, South Dakota, Nebraska, Colorado, and New Mexico.

Material examined.—See Appendix 1. See Appendix 2 for genitalic slides examined.

Discussion.—*Elaphria festivoidea* exhib-



Figs. 5–8. Adults of *Elaphria cornutinis*. 5, ♂ holotype, Sycamore Landing, Seneca, Montgomery Co., MD, 17 May 1977, D. C. Ferguson, USNMENT 00063229. 6, ♂ paratype, 2 mi SE Cumberland, T20N, R12E, Sec. 17, Webster Co., MS, 12 Jun 1990, D. M. Pollock, USNMENT 00063712. 7, ♀ paratype, Lake Tenkiller, 2 mi NW Blackgum, Sequo. Co., OK, 14–16 Jul 1983, D. & M. Davis, USNMENT 00063748. 8, ♀ paratype, Seneca, Montgomery Co., MD, 20 Apr 1985, D. C. Ferguson, USNMENT 00063215.

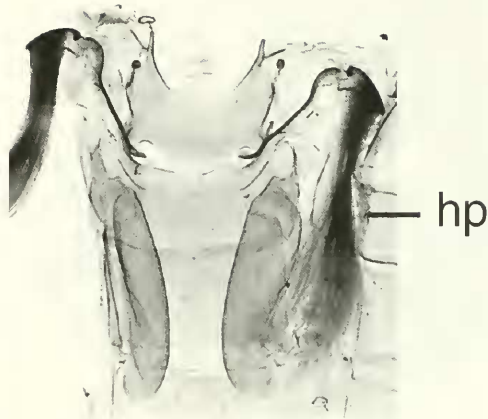
its considerable variation in forewing scale pattern throughout its geographic range. Many specimens from Florida, Texas, and Alabama have a rather faded appearance (~70%), and about 60% of these have dark spots fore and aft of the reniform spot (Fig. 2). The synonym, *Erastria varia* Walker, was described from faded specimens that lack these dark spots. In contrast, specimens from South Dakota have extremely dark

maculation (Fig. 3), making them difficult to distinguish from *E. cornutinis*.

In the aberration "*albovariegata*," there is a white antemedial line, a variable amount of white scaling in the basal third of the forewing, and a distinct white band from below the reniform spot to the inner margin, distal of the postmedian line. Specimens from Maryland north and west usually exhibit this phenotype, with varying



9



10

Figs. 9–10. *Elaphria* species, ♂ abdominal sternite I–IV. 9, *E. festivoidea*, USNM genitalia slide #46267. 10, *E. cornutinis*, USNM genitalia slide #46257, hp = hair-pencils.

degrees of white scaling. Typical *E. festivoidea*, described from Florida, lacks the white scaling in the basal third and along the antemedial and postmedial lines and has the dark spots fore and aft of the reniform spot. Specimens lacking white scaling in the forewing occur most frequently in the southern United States (North Carolina south and west to Texas), in varying frequency with other forms.

Although Rings et al. (1992) suggested that *E. festivoidea* could be distinguished from *E. cornutinis* by the gray costal area on the forewing, this character does not correspond with differences in genitalia. Furthermore, individuals of *E. festivoidea* may have either a gray or brown costal area at a single locality (e.g., Connecticut, New Jersey, and Nova Scotia).

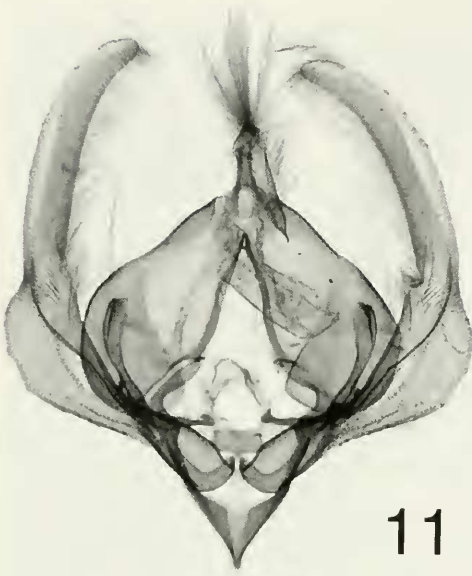
In the check list of the Lepidoptera of America North of Mexico (Franclemont and Todd 1983), *E. varia* is listed as a form, and *E. cephalica* and *E. albovariegata* are listed as synonyms. *Elaphria varia* was described by Walker as a separate species and not a form of *E. festivoidea*; in fact, *E. fes-*

tivoidea is not even mentioned by Walker. Hampson (1909) mentions *E. varia* as Ab. [Aberration] 2, and his Ab. [Aberration] 1 can be referred to as *E. festivoidea* ab. *albovariegata* Strand. Draudt (1926) refers to *E. varia* and *E. albovariegata* as aberrations, as does Kimball (1965). *Elaphria cephalica* is a Grote manuscript name, and therefore is invalid. *Elaphria albovariegata* was described as an aberration by Strand (1916), so it also is considered invalid.

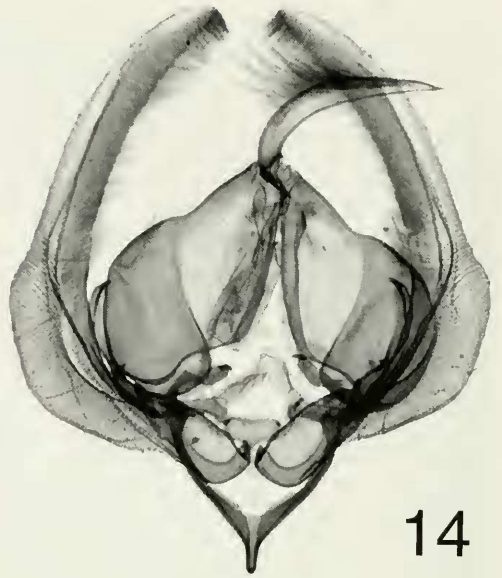
***Elaphria cornutinis* Saluke and Pogue,
new species**

(Figs. 5–8, 10, 14–16, 19–20, 23–24, 27–28, 30)

Diagnosis.—This species generally has a darker and more brown forewing ground color than *E. festivoidea*. The orbicular and claviform spots are distinct in *E. cornutinis*. These spots are less distinct in *E. festivoidea* and tend to be obscured by pale scaling in the basal third of the wing. The ground color of the hindwing in *E. cornutinis* is medium to dark brown and in *E. festivoidea* it



11



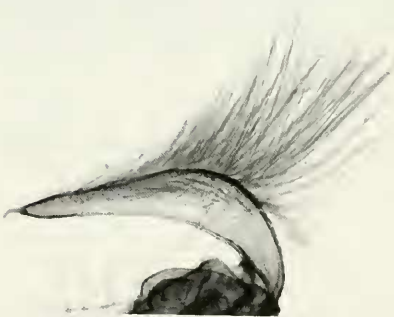
14



12



15



13

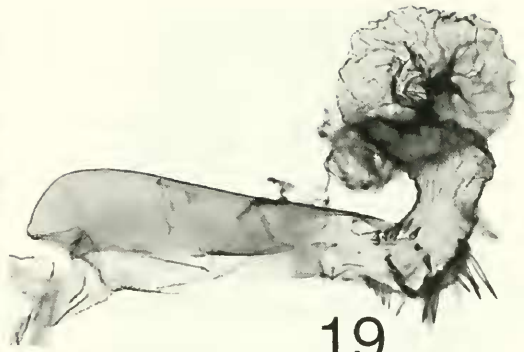


16

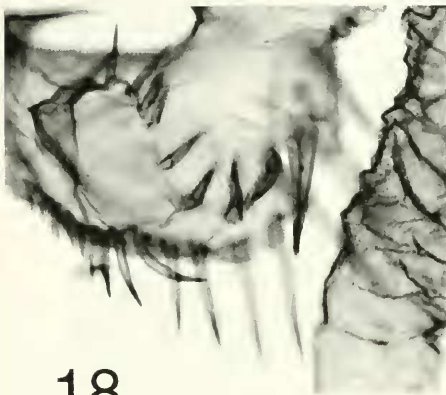
Figs. 11-16. *Elaphria* species, ♂ genitalia. 11, *E. festivoidea*, USNM genitalia slide #46255. 12, Disarticulated valve of *E. festivoidea*, USNM genitalia slide #46245. 13, Uncus of *E. festivoidea*, USNM genitalia slide #46245. 14, *E. cornutinis*, holotype, USNM genitalia slide #46256. 15, Disarticulated valve of *E. cornutinis*, USNM genitalia slide #46241. 16, Uncus of *E. cornutinis*, USNM genitalia slide #46241.



17



19



18



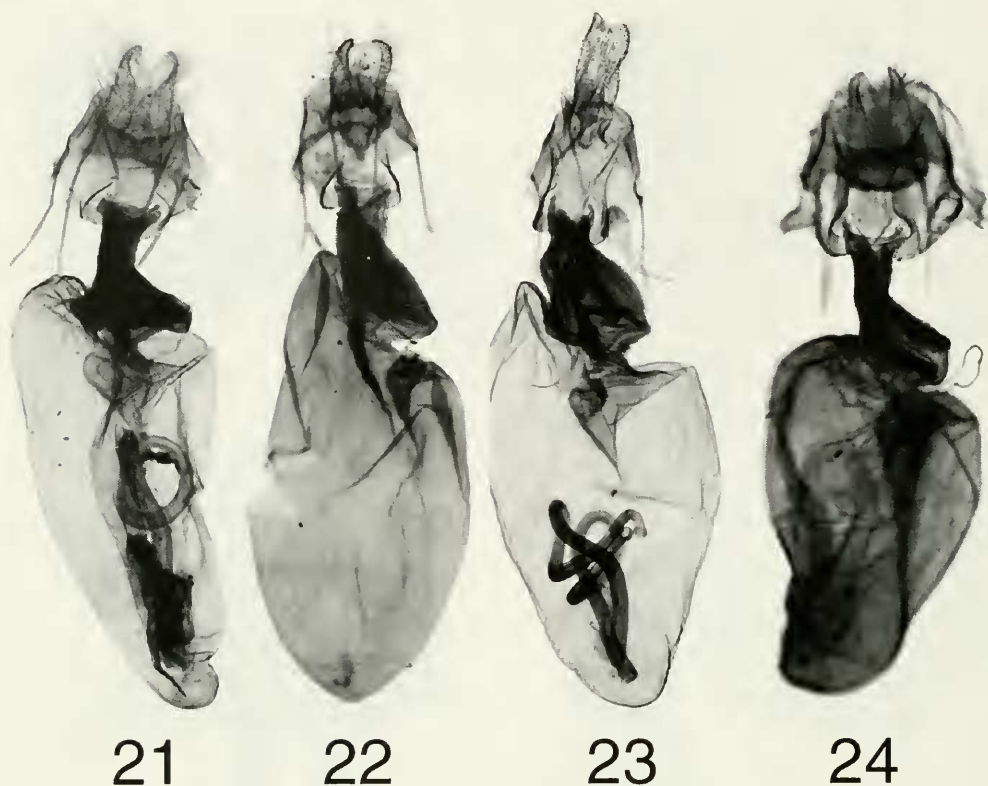
20

Figs. 17–20. *Elaphria* species, ♂ genitalia, aedeagus and vesica. 17. *E. festivooides*, USNM genitalia slide #46267. 18. Close-up of lateral diverticulum of vesica of same specimen. 19. *E. cornutinis*, holotype, USNM genitalia slide #46256. 20. Close-up of lateral diverticulum of same specimen.

is medium to pale brown. The male of *E. cornutinis* has a pair of hair pencils at the base of the abdomen (Fig. 10), structures which *E. festivooides* lack (Fig. 9). The sacculus in *E. cornutinis* gradually narrows at middle, thus having a rounded transition (Figs. 14–15). The sacculus of *E. festivooides* abruptly narrows about half-way to the apex, resulting in an angled appearance (Figs. 11–12). The uncus of *E. cornutinis* is approximately the same width throughout its length (Fig. 16), but that of *E. festivooides* is distinctly wider medially than basally in lateral view (Fig. 13). The number of cornuti range from 33 to 43 ($n = 5$) for *E. cornutinis* and from 19 to 32 ($n = 16$) for *E. festivooides*. Dorsad to the lateral diverticulum of the vesica, *E. cornutinis* has a

double row of about 8 cornuti (Fig. 20), while *E. festivooides* has a single row of only 3 or 4 cornuti (Fig. 18). The appendix bursae of *E. cornutinis* is usually smaller (Figs. 23–24) than that of *E. festivooides* (Figs. 21–22).

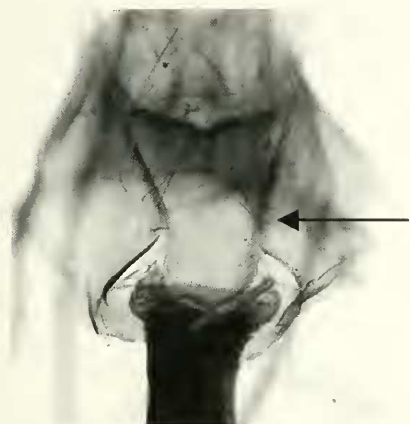
Description.—**Male: Head:** Labial palps white to cream with dark brown laterally. Vertex cream, sometimes scales have tan to orange tips. Antennal scape white, medially mixed with dark brown and rust; flagellum orange, dark brown dorsally, especially at base. **Thorax:** Dorsum cream, medium brown, and gray. Metanotum gray and rust. Patagium with rings of white, dark brown, black, and rust. Tegula predominantly white with flecks of rust and gray. Prothoracic leg predominantly dark brown with some



Figs. 21–24. *Elaphria* species, ♀ genitalia. 21, *E. festivooides*, MGP genitalia slide #1115. 22, *E. festivooides*, USNM genitalia slide #46272. 23, *E. cornutinis*, paratype, USNM genitalia slide #46242. 24, *E. cornutinis*, paratype, USNM genitalia slide #46269.

cream, also with cream apical and anteapical tibial bands; tarsus black with white apical bands. Mesothoracic leg gray, white, and cream with cream apical tibial bands; tarsus gray with white apical bands. Metathoracic leg mixed white, gray, and cream with cream apical tibial bands; tarsus gray with white apical bands. Venter white. *Forewing*: Male length 9–12 mm ($n = 10$). Ground color gray brown. Basal line black proximally and white distally. Antemedial line white proximally and black distally. Postmedial line black proximally and white distally. Subterminal line absent. Orbicular spot with rust and white center and cream outer ring. Claviform spot with cream center and black outer ring. Reniform spot crescent shaped, wrapped around a black spot; cream outline, rust and gray line on proximal side of crescent (interior to cream

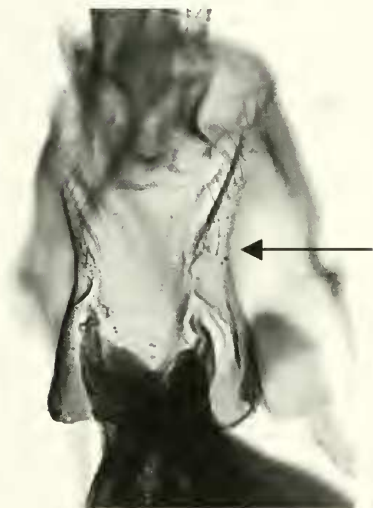
outline), and white center. *Hindwing*: Ground color medium brown, fading to white proximally. *Abdomen*: Dorsum mixture of light brown, white and black with white posterior margins. Venter mixed white, black, and light brown; first abdominal sternite with two lateral projections on posterior margin connecting it to hair pencils; hair pencils present. *Genitalia* (Figs. 13–15, 19–20): Uncus slender, constant width throughout length. Valve narrow, apex pointed. Sacculus widest at base, narrowing with a gradual curve toward apex. Vesica with total number of cornuti between 35 and 45; 8 cornuti dorsal to lateral diverticulum. *Female*: As in male except forewing length 9–12 mm ($n = 10$). *Genitalia* (Figs. 23–24, 26–27): Vento-lateral margin of 8th sternite above ostium bursae vertical to slightly angled medially, forming



25



26



27



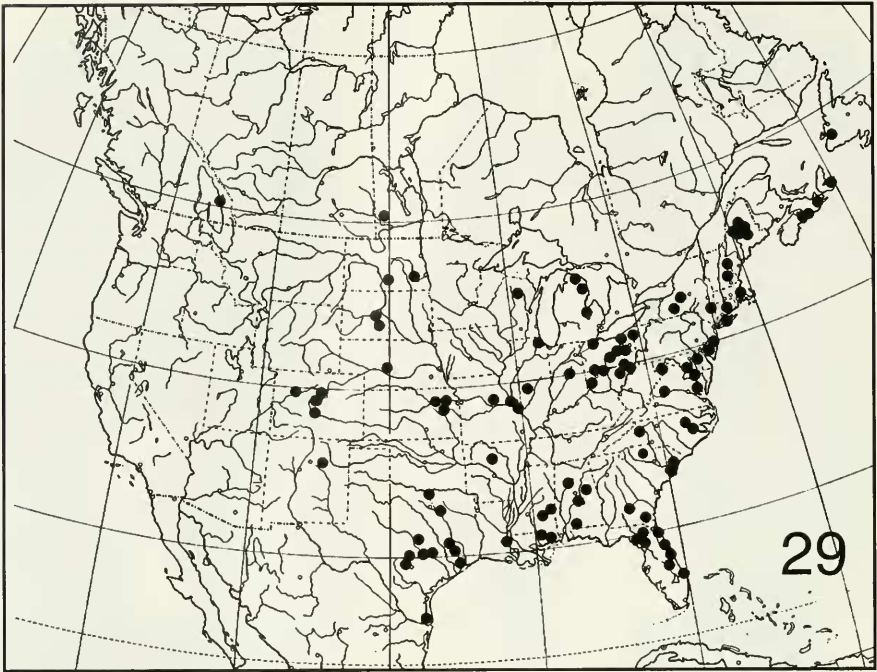
28

Figs. 25–28. *Elaphria* species, ♀ 8th abdominal segment. 25, *E. festivooides*, MGP genitalia slide #1115. 26, *E. festivooides*, USNM genitalia slide #46272. 27, *E. festivooides*, USNM genitalia slide #46242. 28, *E. cornutioides*, paratype, USNM genitalia slide #46269. Arrows point to differences between lateral margins of 8th sternites (see text).

a gap measuring 0.26–0.30 mm (mean = 0.28 mm, $n = 3$).

Type material.—Holotype ♂, in USNM with the following labels: “MD.:Sycamore Landing, Seneca, Montgomery Co., 17 May 1977, D. C. Ferguson/USNM ENT

00063229 [bar code number]/Genitalia Slide by MGP, USNM 46256 [slide number]/HOLOTYPE USNM, *Elaphria cornutioides*, Saluke and Pogue [red label].” Paratypes: 40 ♂, 74 ♀. All specimens listed in Appendix 3 are paratypes. Paratypes have



Figs. 29-30. Distribution. 29, *Elaphria festivoidea*. 30, *E. cornutinis*.

been deposited in the following collections: USNM, MSU, BMNH, AMNH, EHM.

Larval foodplant.—Unknown.

Flight period.—Records (n = 106) for early April through the end of September.

Distribution (Fig. 32).—Specimens identified from Oklahoma, Arkansas, Mississippi, Missouri, Kentucky, Tennessee, Alabama, southeast Michigan, Ohio, and Maryland.

Material examined.—See Appendix 3. See Appendix 4 for genitalic slides examined.

Discussion.—It was very difficult to distinguish this species from *E. festivoidea* because of the great variation in the maculation of the latter. Occasionally it was possible to identify a specimen as *E. cornutinis* by finding the hair pencils, but these may be withdrawn into the pouches in the lateral wall of the abdomen (Fig. 10) so as to be completely inconspicuous. This difficulty forced us to rely heavily upon genitalic characters to define this species.

The two species in this study, *E. festivoidea* and *E. cornutinis*, are the two most similar appearing species among the North American members of the genus *Elaphria*. Genitalic slides and adult specimens of several other North American *Elaphria*, such as *exesa* (Guenée), *fuscimacula* (Grote), *grata* Hübner, *georgei* (Moore and Rawson), *versicolor* (Grote), *chalconia* (Hübner), and *nucicolora* (Guenée) were examined to get an idea of the variation within the genus. Each of these species showed distinct maculation and genitalic characters that made them easily distinguishable from all of the others. The differences observed between *E. festivoidea* and *E. cornutinis* were comparatively small. Females were particularly difficult to identify because we could not find a consistent genitalic character that distinguished the two species. This seemed to indicate that these two species are sister species, and the most recently divergent of the species examined. Since the ranges of these two species overlap and they are very similar in appearance, pher-

omones produced by females of these two species might reveal that they identify conspecifics chemically. In the males, *E. cornutinis* probably uses pre-mating pheromones produced from the abdominal hair pencils, whereas *E. festivoidea* may not use pheromones for pre-mating since these hair pencils are lacking.

Etymology.—The specific epithet, *cornutinis*, refers to the cornuti of the vesica with the Latin suffix *-inis* referring to the arrangement of cornuti into dense lines.

ACKNOWLEDGMENTS

For critically reviewing a draft of this paper, we thank W. E. Miller, University of Minnesota, St. Paul, MN, Eric H. Metzler, Columbus, Ohio, J. Donald Lafontaine, Canadian National Collection, Ottawa, Canada, and J. W. Brown, D. R. Miller, and D. R. Smith, Systematic Entomology Laboratory, U.S.D.A., Washington, D.C. We are grateful to R. L. Brown, Mississippi State University, Mississippi State, MS, E. L. Quinter, American Museum of Natural History, New York, NY, Eric H. Metzler, Columbus, OH, J. Donald Lafontaine, Canadian National Collection, Ottawa, Canada and B. Mather, Clinton, MS for allowing us to borrow, examine, and dissect specimens from their collections. We also express our gratitude to the Research Training Program at the National Museum of Natural History, Smithsonian Institution, through which this study was conducted. This study was funded by the National Science Foundation Research Experiences for Undergraduates in the field of Biology, grant number DBI 9531331.

LITERATURE CITED

- Barnes, W. and J. McDunnough. 1917. Checklist of the Lepidoptera of Boreal America. Herald Press, Decatur, Illinois, 392 pp.
- Boisduval, J. B. A. D. de and A. Guenée. 1852. Histoire Naturelle des Insectes. Species Général des Lépidoptères. Tome Cinquième. Noctuelles. Tome I. Roret, Paris, 407 pp. xcvi.
- Butler, A. G. 1891. Notes on the synonymy of Noctuid moths. The Entomologist 24: 237–242.

- Covell, C. V., Jr. 1984. *A Field Guide to the Moths of Eastern North America*. Houghton Mifflin Co., Boston. xv, 496 pp., 64 plates.
- Draudt, M. 1926. Family Noctuidae, pp. 15–412. *In* Seitz, A. *Die Gross-Schmetterlinge der Erde. Abteilung II. Amerikanischen Faunengebietes. Band 7. Eulenartige Nachtfalter*. Stuttgart. Alfred Kernen. 508 pp., 96 plates.
- Dyar, H. G. [1903]1902. A list of North American Lepidoptera and key to the literature of this order of insects. *Bulletin of the United States National Museum*, No. 52, xix, 723 pp.
- Franclemont, J. G. and E. L. Todd. 1983. Noctuidae, pp. 120–159. *In* Hodges, R. W. et al., eds., *Check List of the Lepidoptera of America North of Mexico*. E.W. Classey Ltd. and The Wedge Entomological Research Foundation, London.
- Hampson, G. F. 1909. *Catalogue of the Lepidoptera Phalaenae in the British Museum*, Vol. 8. Taylor and Francis, London, 583 pp., xiv, plates 123–136.
- Kimball, C. P. 1965. *The Lepidoptera of Florida an annotated checklist*. Division of Plant Industry, State of Florida. Department of Agriculture, Gainesville, Florida, 363 pp., xxvi plates.
- Kitching, I. A. and J. E. Rawlins. 1999. Chapter 19. The Noctuoidea. *In* Kristensen, N. P., ed., *Lepidoptera, Moths and Butterflies, Vol. 1: Evolution, systematics, and biogeography. Handbook of Zoology, Volume IV Arthropoda: Insecta Part 35*, 491 pp. Walter de Gruyter, Berlin.
- Pogue, M. G. and D. C. Ferguson. 1998. Revision of the cypress-feeding moths of the genus *Cutina* Walker (Lepidoptera: Noctuidae). *Proceedings of the Entomological Society of Washington* 100: 331–352.
- Poole, R. W. 1989. *Lepidopterorum Catalogus (New Series), Fascicle 118. Noctuidae*. E.J. Brill and Flora and Fauna Publications, Leiden, 1313 pp.
- Poole, R. W. and P. Gentili, eds. 1996. *Nomina Insecta Nearctica. A Check List of the Insects of North America, Vol. 3. Diptera, Lepidoptera, Siphonaptera*. Entomological Information Services, Rockville, Maryland, 1143 pp.
- Rings, R. W., E. H. Metzler, F. J. Arnold, and D. H. Harris. 1992. The owl moths of Ohio order Lepidoptera family Noctuidae. *Ohio Biological Survey Bulletin. New Series Vol. 9 No. 2*. Vi + 219 pp., 16 pls.
- Rockburne, E. W. and J. D. Lafontaine. 1976. *The Cutworm Moths of Ontario and Quebec. Research Branch Canada Department of Agriculture, Publication 1593*. 164 pp.
- Smith, J. B. 1889. Contributions toward a monograph of the Noctuidae of temperate North America: Genus *Oligia* Hübner. *Entomologica Americana* 8: 143–152.
- . 1891. *List of Lepidoptera of Boreal America*. American Entomological Society, Philadelphia, Pennsylvania, 124 pp.
- Strand, E. 1916. Neue Aberrationen der Noctuidae—Subfamilie Acronyctinae. *Archiv für Naturgeschichte*, 81A(11): 150–165.
- Walker, F. [1858] 1857. *List of Specimens of Lepidopterous Insects in the Collection of the British Museum*, Vol. 12. Edward Newman, London, pp. 764–982.

Appendix 1. *Elaphria festivoidea* material examined, 332 ♂ and 357 ♀.

Bar Code	Sex	State	County	Locality	Date	Collection
63648	F	AL	Baldwin	1 mi E Oyster Bay, T9S, R4E, sec 6, sand dunes	10-14 Mar 1990	Brown
63649	F	AL	Baldwin	1 mi E Oyster Bay, T9S, R4E, sec 6, sand dunes	10-14 Mar 1990	Brown
63650	F	AL	Baldwin	1 mi E Oyster Bay, T9S, R4E, sec 6, sand dunes	10-14 Mar 1990	Brown
63653	F	AL	Baldwin	1 mi E Oyster Bay, T9S, R4E, sec 6, sand dunes	10-14 Mar 1990	Brown
63655	F	AL	Baldwin	1 mi E Oyster Bay, T9S, R4E, sec 6, sand dunes	10-14 Mar 1996	Brown
63690	M	AL	Baldwin	1 mi E Oyster Bay, T9S, R4E, sec 6, sand dunes	10-14 Mar 1990	Brown
63691	M	AL	Baldwin	1 mi E Oyster Bay, T9S, R4E, sec 6, sand dunes	10-14 Mar 1990	Brown
63684	M	AL	Baldwin	1 mi E Oyster Bay, T9S, R4E, Sec. 6	10-14 Mar 1990	Brown
63687	M	AL	Baldwin	1 mi E Oyster Bay, T9S, R4E, Sec. 6	10-14 Mar 1990	Brown
63676	M	AL	Baldwin	1 mi E Oyster Bay, T9S, R4E, Sec. 7 NW	13 Oct 1990	Brown
63651	F	AL	Baldwin	Bon Secour NWR	14 May 1994	Seymour
63683	M	AL	Baldwin	Bon Secour NWR	1 Apr 1994	Pollock
63686	M	AL	Baldwin	Bon Secour NWR	17 Apr 1993	Pollock
63643	F	AL	Baldwin	Bon Secour NWR, foredunes	15 Oct 1996	Schiefer
63646	F	AL	Baldwin	Bon Secour NWR, foredunes	17 Apr 1993	Brown and Pollock
63659	F	AL	Baldwin	Bon Secour NWR, foredunes	15 Oct 1996	Schiefer
63661	F	AL	Baldwin	Bon Secour NWR, foredunes	15 Oct 1996	Schiefer
63670	M	AL	Baldwin	Bon Secour NWR, foredunes	15 Oct 1996	Schiefer
63678	M	AL	Baldwin	Bon Secour NWR, foredunes	15 Oct 1996	Schiefer
63679	M	AL	Baldwin	Bon Secour NWR, foredunes	15 Oct 1996	Schiefer
63680	M	AL	Baldwin	Bon Secour NWR, foredunes	15 Oct 1996	Schiefer
63681	M	AL	Baldwin	Bon Secour NWR, foredunes	15 Oct 1996	Schiefer
63682	M	AL	Baldwin	Bon Secour NWR, foredunes	15 Oct 1996	Schiefer
63688	M	AL	Baldwin	Bon Secour NWR, foredunes	15 Oct 1996	Schiefer
63657	F	AL	Baldwin	Bon Secour NWR, hind dunes	2 Apr 1994	Pollock
63689	M	AL	Baldwin	Bon Secour NWR, hind dunes	2 Apr 1994	Pollock
63644	F	AL	Baldwin	Bon Secour NWR, T9S, R2E, Sec. 24	11 Mar 1990	Brown
63660	F	AL	Baldwin	Bon Secour NWR, T9S, R2E, Sec. 24	12-14 Oct 1991	Brown and Pollock
63652	F	AL	Baldwin	Bon Secour NWR, T9S, R2E, Sec. 25	14 Oct 1990	Brown
63658	F	AL	Baldwin	Bon Secour NWR, T9S, R2E, Sec. 25	14 Oct 1990	Brown
63640	M	AL	Baldwin	Bon Secour NWR, T9S, R2E, Sec. 25	14 Oct 1990	Brown
63671	M	AL	Baldwin	Bon Secour NWR, T9S, R2E, Sec. 25	14 Oct 1990	Brown

Appendix 1. Continued.

Bar Code	Sex	State	County	Locality	Date	Collection
63645	F	AL	Baldwin	Bon Secour NWR, T9S, R2E, Sec. 25 N	11 Oct 1991	Brown and Pollock
63674	M	AL	Baldwin	Bon Secour NWR, T9S, R2E, Sec. 25 N	11 Oct 1991	Brown and Pollock
63675	M	AL	Baldwin	Bon Secour NWR, T9S, R2E, Sec. 25 N	11 Oct 1991	Brown and Pollock
63677	M	AL	Baldwin	Bon Secour NWR, T9S, R2E, Sec. 25 N	11 Oct 1991	Brown and Pollock
63641	F	AL	Baldwin	Bon Secour NWR, T9S, R2E, Sec. 25 S	12-16 Oct 1991	Brown and Pollock
63654	F	AL	Baldwin	Bon Secour NWR, T9S, R2E, Sec. 25 S	12-16 Oct 1991	Brown and Pollock
63662	F	AL	Baldwin	Bon Secour NWR, T9S, R2E, Sec. 25 S	12-16 Oct 1991	Brown and Pollock
63663	F	AL	Baldwin	Bon Secour NWR, T9S, R2E, Sec. 25 S	12-16 Oct 1991	Brown and Pollock
63664	M	AL	Baldwin	Bon Secour NWR, T9S, R2E, Sec. 25 S	12-16 Oct 1991	Brown and Pollock
63665	M	AL	Baldwin	Bon Secour NWR, T9S, R2E, Sec. 25 S	12-16 Oct 1991	Brown and Pollock
63666	M	AL	Baldwin	Bon Secour NWR, T9S, R2E, Sec. 25 S	12-16 Oct 1991	Brown and Pollock
63667	M	AL	Baldwin	Bon Secour NWR, T9S, R2E, Sec. 25 S	12-16 Oct 1991	Brown and Pollock
63668	M	AL	Baldwin	Bon Secour NWR, T9S, R2E, Sec. 25 S	12-16 Oct 1991	Brown and Pollock
63669	M	AL	Baldwin	Bon Secour NWR, T9S, R2E, Sec. 25 S	12-16 Oct 1991	Brown and Pollock
63672	M	AL	Baldwin	Bon Secour NWR, T9S, R2E, Sec. 25 S	12-16 Oct 1991	Brown and Pollock
63673	M	AL	Baldwin	Bon Secour NWR, T9S, R2E, Sec. 25 S	12-16 Oct 1991	Brown and Pollock
63685	M	AL	Baldwin	Bon Secour NWR, T9S, R2E, Sec. 25 S	12-16 Oct 1991	Brown and Pollock
63642	F	AL	Baldwin	Bon Secour NWR, T9S, R2E, Sec. 25 S, dunes	12-16 Oct 1991	Pollock
63639	M	AL	Baldwin	Bon Secour NWR, T9S, R2E, Sec. 25 S, dunes	12-16 Oct 1991	Brown and Pollock
63647	F	AL	Baldwin	Bon Secour NWR, T9S, R3E, Sec. 19 NW	11-15 Oct 1991	Brown and Pollock
63656	F	AL	Baldwin	nr. Bon Secour NWR, oak-pine forest	17 Apr 1993	Brown and Pollock
63631	F	AL	DeKalb	DeSoto St. Park	25-29 Sep 1992	Brown and Pollock
63636	M	AL	DeKalb	DeSoto St. Park	25-29 Sep 1992	Brown and Pollock
63633	F	AL	DeKalb	DeSoto St. Pk., T6S, R10E, Sec. 19SE-20SW	19 May 1990	Brown and Pollock
63629	F	AL	DeKalb	DeSoto St. Pk., T7S, R10E, Sec. 31 SW	20-24 May 1990	Brown and MacGown
63638	M	AL	DeKalb	DeSoto St. Pk., T7S, R10E, Sec. 31 SW	20-24 May 1990	Brown and MacGown
63630	F	AL	Jefferson	Pinson	30 Mar 1986	Brown
63634	M	AL	Lee	2.5 mi E I-85 & US Hwy 29	4 May 1995	Brown and Vogt
63628	F	AL	Monroe	Haines Island Park	4-5 Apr 1995	MacGown
63632	F	AL	Monroe	Haines Island Park	4-5 Apr 1995	MacGown
63635	M	AL	Monroe	Haines Island Park	4-5 Apr 1995	MacGown
63637	M	AL	Monroe	Haines Island Park	4-5 Apr 1995	MacGown
63627	F	AR	Logan	Cove Lake, 1020', T7N, R25W, sec. 35SE	14-20 May 1989	Brown
63067	M	BC		Kaslo Cr		Dyar
63068	F	CO		Vermeyjo R	25 Jun	A.S. Packard
64284	F	CO	Boulder	Mt. Flagstaff	20 Jun 1988	Peigler and Weissman

Appendix 1. Continued.

Bar Code	Sex	State	County	Locality	Date	Collection
64283	M	CO	Boulder	Mt. Flagstaff	20 Jun 1988	Peigler and Weissman
63069	M	CO	Garfield	Glenwood Spgs	July 16-23	
63071	M	CO	Jefferson	Chimney Gulch	16 June 1920	Oslar
63070	M	CO	Jefferson	Clear Creek		Oslar
63098	F	CT	New Haven	Bethany	17 May 1968	Ferguson
63095	F	CT	New Haven	Bethany Ctr	17 Jun 1967	Ferguson
63073	M	CT	New Haven	Bethany Ctr	17 Jun 1967	Ferguson
63074	F	CT	New Haven	Hamden	14 June 1967	Ferguson
63075	M	CT	New Haven	Hamden	9 Jun 1967	Ferguson
63093	M	CT	New Haven	Hamden	4 June	Ferguson
63094	M	CT	New Haven	Hamden	4 June	Ferguson
63083	F	CT	New Haven	West Rock Park	24 May 1966	Ferguson
63077	M	CT	New Haven	West Rock Park	24 May 1966	Ferguson
63078	M	CT	New Haven	West Rock Park	24 May 1966	Ferguson
63079	M	CT	New Haven	West Rock Park	24 May 1966	Ferguson
63080	M	CT	New Haven	West Rock Park	24 May 1966	Ferguson
63081	M	CT	New Haven	West Rock Park	24 May 1966	Ferguson
63082	M	CT	New Haven	West Rock Park	24 May 1966	Ferguson
63084	M	CT	New Haven	West Rock Park	24 May 1966	Ferguson
63085	M	CT	New Haven	West Rock Park	24 May 1966	Ferguson
63086	M	CT	New Haven	West Rock Park	24 May 1966	Ferguson
63089	M	CT	New Haven	West Rock Park	24 May 1966	Ferguson
63090	M	CT	New Haven	West Rock Park	24 May 1966	Ferguson
63091	M	CT	New Haven	West Rock Park	24 May 1966	Ferguson
63092	M	CT	New Haven	West Rock Park	24 May 1966	Ferguson
63099	M	CT	New Haven	West Rock Park	24 May 1966	Ferguson
63072	M	CT	New Haven	Yale Preserve	7 Jun 1965	Ferguson
63076	M	CT	New Haven	Yale Preserve	21 May 1966	Ferguson
63096	M	CT	New Haven	Yale Preserve	9 May 1964	Ferguson
63097	M	CT	New Haven	Yale Preserve	9 May 1964	Ferguson
63593	F	CT	New Haven	Yale Preserve	7 Jun 1965	Ferguson
63586	M	CT	New Haven	Yale Preserve, New Haven	7 Jun 1985	Ferguson
63087	M	CT	New Haven	Yale Preserve, New Haven	24 May 1966	Ferguson
63088	M	CT	New Haven	West Rock Park	24 May 1966	Ferguson
63224	F	DC		West Rock Park		Ferguson

Appendix 1. Continued.

Bar Code	Sex	State	County	Locality	Date	Collection
63225	F	DC			30 Apr	
63100	F	DE	Essex	Newark	30 May 1983	Bray
63128	F	FL				
63137	F	FL				
63152	M	FL				
63147	F	FL	Duval	St Johns Bluff	21 Apr 1962	Ferguson
63151	F	FL	Duval	St Johns Bluff	20 Apr 1962	Ferguson
63625	F	FL	Franklin	Ochlockonee River St. Pk.	10 Oct 1983	Miller
63626	M	FL	Franklin	Ochlockonee River St. Pk.	10 Oct 1983	Miller
63103	F	FL	Highlands	Archbold Biol Sta	12 Mar 1997	Pogue
63104	F	FL	Highlands	Archbold Biol Sta	12 Mar 1997	Pogue
63105	F	FL	Highlands	Archbold Biol Sta	12 Mar 1997	Pogue
63106	F	FL	Highlands	Archbold Biol Sta	12 Mar 1997	Pogue
63107	F	FL	Highlands	Archbold Biol Sta	12 Mar 1997	Pogue
63108	F	FL	Highlands	Archbold Biol Sta	12 Mar 1997	Pogue
63109	F	FL	Highlands	Archbold Biol Sta	12 Mar 1997	Pogue
63110	F	FL	Highlands	Archbold Biol Sta	12 Mar 1997	Pogue
63111	F	FL	Highlands	Archbold Biol Sta	12 Mar 1997	Pogue
63112	F	FL	Highlands	Archbold Biol Sta	12 Mar 1997	Pogue
63113	F	FL	Highlands	Archbold Biol Sta	12 Mar 1997	Pogue
63114	F	FL	Highlands	Archbold Biol Sta	12 Mar 1997	Pogue
63115	M	FL	Highlands	Archbold Biol Sta	12 Mar 1997	Pogue
63102	F	FL	Highlands	Archbold Biol Sta, Lake Placid	18 Feb 1985	Ferguson
63138	F	FL	Highlands	Archbold Biol Sta, Lake Placid	19 Feb 1985	Ferguson
63139	F	FL	Highlands	Archbold Biol Sta, Lake Placid	22 Feb 1985	Ferguson
63146	F	FL	Highlands	Archbold Biol Sta, Lake Placid	22 Feb 1985	Ferguson
63124	M	FL	Highlands	Archbold Biol Sta, Lake Placid	17 Feb 1985	Ferguson
63125	M	FL	Highlands	Archbold Biol Sta, Lake Placid	17 Feb 1985	Ferguson
63126	M	FL	Highlands	Archbold Biol Sta, Lake Placid	21 Feb 1985	Ferguson
63129	M	FL	Highlands	Archbold Biol Sta, Lake Placid	20 Feb 1985	Ferguson
63130	M	FL	Highlands	Archbold Biol Sta, Lake Placid	25 Feb 1985	Ferguson
63143	F	FL	Highlands	Archbold Biol Sta, Lake Placid	28 Mar 1962	Ferguson
63120	F	FL	Indian River	Archbold Biological Sta	25 Mar 1962	Ferguson
63101	F	FL	Leon	Vero Beach	Dec 1941	Mallock
63149	F	FL	Putnam	Tall Timbers Res. Stat.	26-27 Sept 1972	Todd
63150	F	FL	Putnam	University Conservation Reserve, Welaka	10 Mar 1962	Ferguson
				University Conservation Reserve, Welaka	12 Mar 1962	Ferguson

Appendix 1. Continued.

Bar Code	Sex	State	County	Locality	Date	Collection
63131	M	FL	Putnam	University Conservation Reserve, Welaka	12 Mar 1962	Ferguson
63132	M	FL	Putnam	University Conservation Reserve, Welaka	21 Mar 1962	Ferguson
63134	M	FL	Putnam	University Conservation Reserve, Welaka	15 Mar 1962	Ferguson
63135	M	FL	Putnam	University Conservation Reserve, Welaka	15 Mar 1962	Ferguson
63141	F	FL	Putnam	University Reserve, Welaka	15 Apr 1962	Ferguson
63142	F	FL	Putnam	University Reserve, Welaka	12 Apr 1962	Ferguson
63145	F	FL	Putnam	University Reserve, Welaka	19 Apr 1973	Ferguson
63148	F	FL	Putnam	University Reserve, Welaka	12 Apr 1962	Ferguson
63594	F	FL	Putnam	University Reserve, Welaka	10 Apr 1962	Ferguson
63133	M	FL	Putnam	University Reserve, Welaka	8 Apr 1962	Ferguson
63136	M	FL	Putnam	University Reserve, Welaka	9 Apr 1962	Ferguson
63596	M	FL	Putnam	University Reserve, Welaka	10 Apr 1962	Ferguson
64117	M	FL	Putnam	Welaka	28 Sep-1 Oct 1972	Todd
63116	F	FL	Suwannee	Suwannee River S Pk	10 Apr 1987	Steiner
63118	F	FL	Suwannee	Suwannee River S Pk	10 Apr 1987	Steiner
63144	F	FL	Volusia	Cassadaga	24 Mar 1965	Fuller
63157	F	GA	Charlton	Okfenokee Natl Wildlife Refuge	19 Apr 1991	Ferguson
63158	F	GA	Charlton	Okfenokee Natl Wildlife Refuge	19 Apr 1991	Ferguson
63159	F	GA	Charlton	Okfenokee Natl Wildlife Refuge	20 Apr 1991	Ferguson
63156	F	GA	Charlton	Okfenokee Refuge Hdqtrs, near Folkston	2 May 1981	Ferguson
63155	M	GA	Charlton	Okfenokee Refuge Hdqtrs, near Folkston	3 May 1981	Ferguson
63154	F	GA	Fullton	Atlanta	17 May 1941	Fätting
63160	F	IL	Cook	Evanston	27 May 1895	
63161	M	IL	Macon	Decatur	8 May 1915	
63162	F	IN	Tippecanoe	Lafayette	9 Aug 1915	
63163	F	IN	Tippecanoe	Lafayette	13 Aug 1915	
63164	F	IN	Tippecanoe	Lafayette	15 May 1916	
63167	F	KS	Crawford	4 mi E Pittsburg	1-15 Sep 1972	Todd
63166	M	KS	Crawford	4 mi E Pittsburg	1-15 Sep 1972	Todd
63165	M	KS	Douglas	Kan Univ	25 Jul 1937	Fritz
63168	F	KS	Labette	Oswego	2 Sep 1965	Hevel
63620	M	LA	Bossier	Barksdale AFB	24 Apr 1996	Pollock
63622	M	LA	Bossier	Barksdale AFB	18 Apr 1996	Pollock
63616	F	LA	Bossier	Barksdale AFB, calcareous prairie	9 May 1996	Pollock
63621	M	LA	Bossier	Barksdale AFB, calcareous prairie	14 Sep 1996	Brown
63617	F	LA	Bossier	Barksdale AFB, shortleaf-pine forest	6 May 1996	Pollock

Appendix 1. Continued.

Bar Code	Sex	State	County	Locality	Date	Collection
63618	M	LA	Bossier	Barksdale AFB, shortleaf-pine forest	6 May 1996	Pollock
63619	M	LA	Bossier	Barksdale AFB, shortleaf-pine forest	24 Apr 1996	Pollock
63623	M	LA	Bossier	Barksdale AFB, shortleaf-pine forest	15 May 1996	Pollock
63624	M	LA	Bossier	Barksdale AFB, shortleaf-pine forest	1 May 1996	Pollock
63238	F	MA	Hampden	Chicopee	2 Jun 1899	Knab
63237	F	MA	Middlesex	Concord	3 Jun 1913	Reiff
63210	M	Man		Beverly Farms	10 Jun 1913	Reiff
63211	M	Man		Miniota		Gibbon
63234	F	MD	Anne Arundel	STHVN UU61 JWC CLS	17 May 1991	Stevenson
63222	F	MD	Calvert	Camp Bay Breeze nr Lusby	8 Jun 1963	Flint
63235	F	MD	Calvert	Flag ponds mixed woods UT76	9 May 1991	Stevenson
63226	F	MD	Cecil	Elkton	29 May 1983	Bray
63230	M	MD	Prince George's	Patuxent Natl Wildlife Research Center	12 May 1979	Ferguson
63179	F	ME				
63180	F	ME		Houton	10 Jul 1945	
63199	M	ME		Oguosoc	6 Jul	
63182	F	ME		Ashland	3 Jul 1943	
63183	F	ME	Aroostook	Bar Harbor	17 Jul 1933	Brower
63190	F	ME	Hancock	Bar Harbor	22 Jun 1933	
63192	F	ME	Hancock	Bar Harbor	24 Jul 1933	Brower
63193	F	ME	Hancock	Bar Harbor	10 Jul 1935	Brower
63195	F	ME	Hancock	Bar Harbor	4 Jul 1934	
63196	M	ME	Hancock	Bar Harbor	7 Jun 1937	Brower
63200	M	ME	Hancock	Bar Harbor	7 Jun 1937	Brower
63203	M	ME	Hancock	Bar Harbor	28 Jun 1933	
63204	M	ME	Hancock	Bar Harbor	1 Jul 1934	
63208	M	ME	Hancock	Bar Harbor	19 Jul 1934	Brower
63209	M	ME	Hancock	Bar Harbor	23 Jun 1932	
63187	F	ME	Hancock	Mt Desert Is	13 Jun 1932	
63207	M	ME	Hancock	Mt Desert Is	10 Jun 1967	Dearborn
63188	F	ME	Kennebec	Mt Vernon	9 Jul	
63172	M	ME	Kennebec	Pittston Farm	5 July	
63184	F	ME	Penobscot	Lincoln	6 Jul	
63186	F	ME	Penobscot	Lincoln	10 Jul 1935	
63191	F	ME	Penobscot	Lincoln	10 Jul 1935	
63197	M	ME	Penobscot	Lincoln		

Appendix 1. Continued.

Bar Code	Sex	State	County	Locality	Date	Collection
63198	M	ME	Penobscot	Lincoln	7 Jul 1935	
63201	M	ME	Penobscot	Lincoln	18 Jul 1937	
63206	M	ME	Penobscot	Lincoln	7 Jul	
63202	M	ME	Penobscot	Passadumkeag	1 Jun 1936	
63205	M	ME	Penobscot	Passadumkeag	18 Jun 1938	
63181	F	ME	Penobscot	Patten	26 Jul	
63185	F	ME	Piscataquis	Chesuncook	13 Jul	
63194	F	ME	Piscataquis	Mt Katahdin	9 Jul 1939	
63177	F	ME	Piscataquis	Sebec Lake	24 Jun 1930	
63178	F	ME	Piscataquis	Sebec Lake	24 Jun 1930	
63173	M	ME	Piscataquis	Sebec Lake	16 Jun 1923	
63174	M	ME	Piscataquis	Sebec Lake	24 Jun 1930	
63175	M	ME	Piscataquis	Sebec Lake	24 Jun 1930	
63176	M	ME	Piscataquis	Sebec Lake	24 Jun 1930	
63189	F	ME	Somerset	top, Mt. Bigelow	7 Jul 1937	
63253	M	MI	Crawford	10 mi W of Roscommon	29 May 1938	McAlpine
63595	M	MI	Crawford	10 mi W of Roscommon	29 May 1938	McAlpine
63243	M	MI	Crawford	5 mi W of Roscommon	19 May 1938	McAlpine
63244	M	MI	Crawford	5 mi W of Roscommon	19 May 1938	McAlpine
63246	M	MI	Crawford	5 mi W of Roscommon	29 May 1938	McAlpine
63247	M	MI	Crawford	5 mi W of Roscommon	29 May 1938	McAlpine
63251	M	MI	Crawford	5 mi W of Roscommon	29 May 1938	McAlpine
63240	F	MI	Montgomery	Atlanta	31 May 1936	McAlpine
63245	M	MI	Montgomery	Atlanta	31 May 1938	McAlpine
63249	M	MI	Montgomery	Atlanta	31 May 1936	McAlpine
63239	F	MI	Oakland	Franklin	24 May 1936	McAlpine
63241	F	MI	Oakland	Franklin	2 Jun 1932	McAlpine
63242	F	MI	Oakland	Franklin	2 Jun 1934	McAlpine
63248	M	MI	Oakland	Franklin	2 Jun 1934	McAlpine
63250	M	MI	Oakland	Franklin	2 Jun 1937	McAlpine
63252	M	MI	Oakland	Franklin	4 Jun 1937	McAlpine
64115	M	MI	Oakland	Franklin	24 May 1936	Luca
64116	M	MI	Oakland	Franklin	11 Jun 1934	Luca
63254	M	MI	Oakland	Royal Oak	12 Jun 1934	McAlpine
63255	M	MI	Oscoda	Luzerne	14 May 1915	McAlpine
					4 Jun 1944	Rawson

Appendix 1. Continued.

Bar Code	Sex	State	County	Locality	Date	Collection
63273	F	MO	Benton	3 Miles NW of Warsaw on State hwy UU	3 May 1975	Heitzman
63271	M	MO	Benton	4 mi NW of Warsaw, along MO State UU	7 May 1970	Heitzman
63262	M	MO	Benton	4 mi NW of Warsaw, along MO State UU	7 May 1970	Heitzman
64119	F	MO	Benton	4 mi NW of Warsaw, along MO State UU	7 May 1970	Heitzman
63263	F	MO	Benton	4 mi NW of Warsaw, along MO State UU	21 May 1970	Heitzman
63264	F	MO	Benton	4 mi NW of Warsaw, along MO State UU	7 May 1970	Heitzman
63265	F	MO	Benton	4 mi NW of Warsaw, along MO State UU	7 May 1970	Heitzman
63266	F	MO	Benton	4 mi NW of Warsaw, along MO State UU	21 May 1970	Heitzman
63267	F	MO	Benton	4 mi NW of Warsaw, along MO State UU	7 May 1970	Heitzman
63268	F	MO	Benton	4 mi NW of Warsaw, along MO State UU	21 May 1970	Heitzman
63269	F	MO	Benton	4 mi NW of Warsaw, along MO State UU	7 May 1970	Heitzman
63274	F	MO	Benton	4 mi NW of Warsaw, along MO State UU	7 May 1970	Heitzman
63384	F	MO	Benton	4 mi NW of Warsaw, along MO State UU	7 May 1970	Heitzman
63257	M	MO	Benton	4 mi NW of Warsaw, along MO State UU	7 May 1970	Heitzman
63258	M	MO	Benton	4 mi NW of Warsaw, along MO State UU	7 May 1970	Heitzman
63259	M	MO	Benton	4 mi NW of Warsaw, along MO State UU	15 May 1970	Heitzman
63260	M	MO	Benton	4 mi NW of Warsaw, along MO State UU	15 May 1970	Heitzman
63261	M	MO	Benton	near Warsaw	15 May 1970	Heitzman
63385	M	MO	Benton	near Warsaw	15 May 1970	Heitzman
63588	M	MO	Benton	Warsaw	15 May 1970	Heitzman
63272	F	MO	St. Louis	St. Louis	25 Aug 1963	McElhose
63270	M	MO	St. Louis	St. Louis	29 Apr 1903	Duckworth & Davis
63256	F	MS	Clarke	Clarke State Park	15 Aug 1963	Kergosien
64329	M	MS	Forest	Brooklyn	21 Sep-10 Oct 1996	Kergosien
64392	F	MS	Forrest	Hattiesburg	16-30 Sep 1944	Michener
63710	F	MS	Franklin	Trib. of McGehee Crk., T6N, R4E, Sec. 26SW	8 Apr 1992	MacGown and Schiefer
64404	F	MS	George	3 miles north of Lucedale	1-8 Apr 1996	Kergosien
64405	F	MS	George	3 miles north of Lucedale	1-8 Apr 1996	Kergosien
64406	F	MS	George	3 miles north of Lucedale	9-14 Apr 1996	Kergosien
64407	F	MS	George	3 miles north of Lucedale	19 Aug-17 Sep 1996	Kergosien
64408	F	MS	George	3 miles north of Lucedale	19 Aug-17 Sep 1996	Kergosien
64409	F	MS	George	3 miles north of Lucedale	16 Feb-7 Mar 1997	Kergosien
64294	M	MS	George	3 miles north of Lucedale	18 Sep-11 Oct 1996	Kergosien
64335	M	MS	George	3 miles north of Lucedale	3-18 Mar 1996	Kergosien
64336	M	MS	George	3 miles north of Lucedale	9-14 Apr 1996	Kergosien
64337	M	MS	George	3 miles north of Lucedale	16 Feb-7 Mar 1997	Kergosien
63701	F	MS	George	4.5 mi NNW Lucedale, T1S, R6W, Sec. 6 SE	29-30 Oct 1989	Schiefer

Appendix 1. Continued.

Bar Code	Sex	State	County	Locality	Date	Collection
63702	F	MS	George	4.5 mi NNW Lucedale, T1S, R6W, Sec. 6 SE	29-30 Oct 1989	Schiefer
63705	F	MS	George	4.5 mi NNW Lucedale, T1S, R6W, Sec. 6 SE	29-30 Oct 1989	Schiefer
63707	F	MS	George	4.5 mi NNW Lucedale, T1S, R6W, Sec. 6 SE	11 Mar 1991	Pollock
63708	F	MS	George	4.5 mi NNW Lucedale, T1S, R6W, Sec. 6 SE	29-30 Oct 1989	Schiefer
63696	M	MS	George	4.5 mi NNW Lucedale, T1S, R6W, Sec. 6 SE	29-30 Oct 1989	Schiefer
64394	F	MS	Hancock	Bay St. Louis	2 Aug 1979	Kergosien
64395	F	MS	Hancock	Bay St. Louis	27 Apr 1978	Kergosien
64396	F	MS	Hancock	Bay St. Louis	1 Jul 1979	Kergosien
64380	F	MS	Harrison	Biloxi	17 Apr 1964	Taylor
64381	F	MS	Harrison	Biloxi	10 Apr 1964	Taylor
64382	F	MS	Harrison	Biloxi	23 Apr 1964	Taylor
64352	M	MS	Harrison	Biloxi	3 Apr 1964	Taylor
64400	F	MS	Harrison	Handsboro	5 Apr 1967	Taylor
64355	M	MS	Harrison	Handsboro	14 Apr 1967	Taylor
64367	F	MS	Harrison	Lizana	27 Sep 1991	Kergosien
64368	F	MS	Harrison	Lizana	16 Sep 1991	Kergosien
64369	F	MS	Harrison	Lizana	4 Oct 1991	Kergosien
64328	M	MS	Harrison	Lizana	22 Sep 1991	Kergosien
64285	F	MS	Harrison	Long Beach	16 Oct 1990	Kergosien
64393	F	MS	Harrison	Long Beach	20 Apr 1991	Kergosien
64286	M	MS	Harrison	Long Beach	21 Oct 1992	Kergosien
64346	M	MS	Harrison	Long Beach	11 Apr 1991	Kergosien
64347	M	MS	Harrison	Long Beach	8 Oct 1996	Kergosien
64348	M	MS	Harrison	Long Beach	20 Oct 1990	Mather
64349	M	MS	Harrison	Long Beach	21 Oct 1992	Kergosien
64398	F	MS	Harrison	Pass Christian	12 Jul 1979	Kergosien
64399	F	MS	Harrison	Pass Christian	18 Jul 1979	Kergosien
64401	F	MS	Harrison	Pass Christian	1 Jun 1979	Kergosien
64356	M	MS	Harrison	Pass Christian	14 Jul 1979	Kergosien
64370	F	MS	Hinds	Clinton	6 Apr 1995	Roshore
64371	F	MS	Hinds	Clinton	10 Apr 1992	Roshore
64372	F	MS	Hinds	Clinton	16 Apr 1995	Roshore
64373	F	MS	Hinds	Clinton	19 Apr 1995	Roshore
64374	F	MS	Hinds	Clinton	21 Apr 1968	Roshore
64375	F	MS	Hinds	Clinton	23 Apr 1966	Roshore
64376	F	MS	Hinds	Clinton	30 Apr 1994	Roshore

Appendix 1. Continued.

Bar Code	Sex	State	County	Locality	Date	Collection
64377	F	MS	Hinds	Clinton	5 May 1994	Roshore
64378	F	MS	Hinds	Clinton	27 Sep 1992	Roshore
64379	F	MS	Hinds	Clinton	8 Apr 1970	Mather
64397	F	MS	Hinds	Clinton	8 Apr 1970	Mather
63698	m	MS	Hinds	Clinton	23 Apr 1966	B. Mather
64287	M	MS	Hinds	Clinton	12 Apr 1992	Roshore
64338	M	MS	Hinds	Clinton	22 Apr 1962	Roshore
64339	M	MS	Hinds	Clinton	23 Apr 1992	Roshore
64340	M	MS	Hinds	Clinton	26 Apr 1994	Roshore
64341	M	MS	Hinds	Clinton	29 Apr 1994	Roshore
64342	M	MS	Hinds	Clinton	13 May 1996	Roshore
64343	M	MS	Hinds	Clinton	15 Oct 1993	Roshore
64344	M	MS	Hinds	Clinton	18 Oct 1993	Roshore
64345	M	MS	Hinds	Clinton	26 Oct 1993	Roshore
63698	M	MS	Hinds	Clinton	23 Apr 1966	Mather
64288	F	MS	Hinds	Jackson	18 Mar 1961	Mather
64353	M	MS	Hinds	Jackson	5 May 1962	Mather
64354	M	MS	Hinds	Jackson	9 May 1964	Mather
63699	M	MS	Jackson	1 mi W Hwy 90 & 57, T7S, R8W, Sec 25	15 Apr 1989	Brown
64351	M	MS	Jackson	O. Springs	3 Jun 1979	Kergosien
64333	M	MS	Jackson	Shepard	19 Sep-2 Oct 1995	Kergosien
64334	M	MS	Jackson	Shepard	14-27 Oct 1995	Kergosien
64402	F	MS	Jackson	Shepard State Park	19 Sep-2 Oct 1995	Kergosien
64403	F	MS	Jackson	Shepard State Park	14-27 Oct 1995	Kergosien
64390	F	MS	Lafayette	Oxford	31 Aug 1973	Kergosien
64383	F	MS	Lee	Tombigbee State Park	22 May-4 June 1993	Kergosien
64384	F	MS	Lee	Tombigbee State Park	12-17 Aug 1994	Kergosien
64385	F	MS	Lee	Tombigbee State Park	5-27 Sep 1994	Kergosien
64330	M	MS	Lee	Tombigbee State Park	17-31 May 1994	Kergosien
64331	M	MS	Lee	Tombigbee State Park	8-21 May 1993	Kergosien
64332	M	MS	Lee	Tombigbee State Park	4-30 Sep 1993	Kergosien
64391	F	MS	Lee	Tupelo	18 Apr 1970	Mather
64386	F	MS	Lowndes	Columbus	16 Apr 1964	Mather
64387	F	MS	Lowndes	Columbus	16 Apr 1964	Mather
64388	F	MS	Lowndes	Columbus	17 Apr 1964	Mather
63693	M	MS	Lowndes	T19N, R16E, Sec. 30SE	17 Apr 1991	Pollock

Appendix 1. Continued.

Bar Code	Sex	State	County	Locality	Date	Collection
63693	M	MS	Lownoes	T19N, R16E, Sec. 30SE	17 Apr 1991	Pollock
63700	F	MS	Oktibbeha	6 mi SW Starkville	25 Apr 1985	Brown
63704	F	MS	Oktibbeha	6 mi SW Starkville	30 Apr 1987	Brown
63711	F	MS	Oktibbeha	6 mi SW Starkville	2 Apr 1986	Brown
63709	F	MS	Oktibbeha	A&M College	18 Jun 1931	Hutchins
63604	M	MS	Oktibbeha	A&M College	24 Aug 1931	Hutchins
63695	M	MS	Oktibbeha	A&M College	29 Apr 1931	Hutchins
64350	M	MS	Oktibbeha	Mississippi State University	14 Oct 1975	Bryson
63697	M	MS	Oktibbeha	Starkville	13 May 1983	Porter
63692	M	MS	Oktibbeha	T18N, R14E, Sec. 23	18 Sep 1987	Brown
64389	F	MS	Rankin	Pearl	3 Apr 1964	Mather
63703	F	MS	Stone	Sweetbay Bogs, T2S, R13W, Sec 34SW	12 Mar 1991	Pollock
63694	F	MS	Tishomingo	Tishomingo State Park	11-12 Apr 1986	MacDonald
63706	F	MS	Tishomingo	Tishomingo State Park	11-12 Apr 1986	MacDonald
63706	F	MS	Tishomingo	Tishomingo State Park	11-12 Apr 1986	MacDonald
63694	M	MS	Tishomingo	Tishomingo State Park	11-12 Apr 1986	MacDonald
63381	F	NC	Columbus	Lake Maccamaw	10 May 1985	Steiner & Gerberich
63374	F	NC	Moore	Niagra	25 Apr 1954	
63376	F	NC	Moore	Niagra	24 Apr 1954	
63377	F	NC	Moore	Niagra	30 Apr 1954	
63379	F	NC	Moore	Niagra	30 Apr 1954	
63380	F	NC	Moore	Niagra	30 Apr 1954	
63382	M	NC	Moore	Southern Pines	8 May 1986	Steiner
63375	F	NC	Polk	Tryon	30 Apr 1904	
63378	F	NC	Polk	Tryon	5 21	
63613	M	ND	Emmons	16 mi E Linton	20 Jun 1975	Lago
63614	M	ND	Emmons	16 mi E Linton	20 Jun 1975	Lago
63615	M	ND	Emmons	16 mi E Linton	20 Jun 1975	Lago
63386	M	ND	North Cass	Red River, Fargo	9 Jun 1961	Poole
63276	M	NE	Cherry	Fort Niobrara	14 Jun 1983	Ferguson
63275	M	NE	Cherry	Hackberry Lake, Valentine NWR	18 Jun 1983	Ferguson
63277	M	NF	W. Newfoundland	South Branch	4 Jul 1949	Krogerus
63282	F	NH	Belknap	Squam Lake		Allen
63279	M	NH	Carroll	Center Harbor		
63281	F	NH	Hillsboro	Manchester		
63283	F	NH	Rockingham	Hampton	21 Jun 1931	Shaw

Appendix 1. Continued.

Bar Code	Sex	State	County	Locality	Date	Collection
63278	M	NH	Rockingham	Hampton	3 Jun 1902	Shaw
63280	M	NH	Rockingham	Hampton	4 Jun 1940	Shaw
63313	F	NJ	Burlington	Medford Township, Lake Pine	7 Jun 1973	Rentz
63314	F	NJ	Burlington	Medford Township, Lake Pine	16 Aug 1974	Rentz
63315	F	NJ	Burlington	Medford Township, Lake Pine	7 Jun 1973	Rentz
63310	M	NJ	Burlington	Medford Township, Lake Pine	7 Jun 1973	Rentz
63311	M	NJ	Burlington	Medford Township, Lake Pine	7 Jun 1973	Rentz
63312	M	NJ	Burlington	Medford Township, Lake Pine	7 Jun 1973	Rentz
63308	F	NJ	Hunterdon	Woodglen	22 Jun 1971	
63309	F	NJ	Hunterdon	Woodglen	13 Jun 1971	
63300	F	NJ	Ocean	Lakehurst	May 1929	Lemmer
63303	F	NJ	Ocean	Lakehurst	May 1975 (1925?)	
63284	M	NJ	Ocean	Lakehurst	May 1929	Lemmer
63295	M	NJ	Ocean	Lakehurst	May 1929	Lemmer
63296	F	NJ	Ocean	Lakehurst, Wrangle Book Rd	30 May 1956	Ferguson
63297	F	NJ	Ocean	Lakehurst, Wrangle Book Rd	8 Jun 1956	Ferguson
63298	F	NJ	Ocean	Lakehurst, Wrangle Book Rd	31 May 1956	Ferguson
63299	F	NJ	Ocean	Lakehurst, Wrangle Book Rd	3 Jun 1956	Ferguson
63301	F	NJ	Ocean	Lakehurst, Wrangle Book Rd	31 May 1956	Ferguson
63302	F	NJ	Ocean	Lakehurst, Wrangle Book Rd	8 Jun 1956	Ferguson
63304	F	NJ	Ocean	Lakehurst, Wrangle Book Rd	3 Jun 1956	Ferguson
63305	F	NJ	Ocean	Lakehurst, Wrangle Book Rd	30 May 1956	Ferguson
63306	F	NJ	Ocean	Lakehurst, Wrangle Book Rd	30 May 1956	Ferguson
63307	F	NJ	Ocean	Lakehurst, Wrangle Book Rd	8 Jun 1956	Ferguson
63383	F	NJ	Ocean	Lakehurst, Wrangle Book Rd	31 May 1956	Ferguson
63285	M	NJ	Ocean	Lakehurst, Wrangle Book Rd	30 May 1956	Ferguson
63286	M	NJ	Ocean	Lakehurst, Wrangle Book Rd	8 Jun 1956	Ferguson
63287	M	NJ	Ocean	Lakehurst, Wrangle Book Rd	7 Jun 1956	Ferguson
63288	M	NJ	Ocean	Lakehurst, Wrangle Book Rd	31 May 1956	Ferguson
63289	M	NJ	Ocean	Lakehurst, Wrangle Book Rd	3 Jun 1956	Ferguson
63290	M	NJ	Ocean	Lakehurst, Wrangle Book Rd	8 Jun 1956	Ferguson
63291	M	NJ	Ocean	Lakehurst, Wrangle Book Rd	3 Jun 1956	Ferguson
63292	M	NJ	Ocean	Lakehurst, Wrangle Book Rd	31 May 1956	Ferguson
63293	M	NJ	Ocean	Lakehurst, Wrangle Book Rd	7 Jun 1956	Ferguson
63294	M	NJ	Ocean	Lakehurst, Wrangle Book Rd	3 Jun 1956	Ferguson
63592	M	NJ	Ocean	Lakehurst, Wrangle Book Rd	3 Jun 1956	Ferguson

Appendix 1. Continued.

Bar Code	Sex	State	County	Locality	Date	Collection
63316	M	NM	San Miguel	Las Vegas	30 Jul 1970	Ferguson
63317	M	NM	San Miguel	Las Vegas	18 Jun 1908	Russell
63356	M	NS		Baddock, Cape Breton Is	25 Jun 1908	Russell
63343	F	NS		Digby	26 Jun 1908	Russell
63344	F	NS		Digby		
63352	F	NS		Digby		
63361	M	NS		Digby		
63345	F	NS	Annapolis	South Milford	23 Jun 1950	Ferguson
63348	F	NS	Halifax	Bog E of Big Indian L, Halifax Watershed	26 Jun 1968	Ferguson
63353	M	NS	Halifax	Bog E of Big Indian L, Halifax Watershed	24 Jun 1963	Ferguson
63358	M	NS	Halifax	Bog E of Big Indian L, Halifax Watershed	24 Jun 1962	Ferguson
63360	M	NS	Halifax	Bog E of Big Indian L, Halifax Watershed	24 Jun 1962	Ferguson
63364	M	NS	Halifax	Bog E of Big Indian L, Halifax Watershed	24 Jun 1968	Ferguson
63354	M	NS	Halifax	Boulderwood	26 Jul 1959	Ferguson
63357	M	NS	Halifax	Boulderwood	26 Jun 1959	Ferguson
63368	M	NS	Halifax	Halifax Watershed Area	2 Jun 1955	Ferguson
63372	M	NS	Halifax	Halifax Watershed Area	5 Jun 1955	Ferguson
63355	M	NS	Halifax	near Big Indian L, Halifax watershed	24 Jun 1963	Ferguson
63349	F	NS	Halifax	Peggy's Cove	11 Jul 1953	Ferguson
63346	F	NS	Halifax	Purcell's Cove	6 Jun 1960	Ferguson
63373	M	NS	Halifax	Purcell's Cove	12 Jul 1962	Ferguson
63366	M	NS	Halifax	West Dover	28 Jun 1955	Ferguson
63369	M	NS	Halifax	West Dover	30 Jun 1968	Ferguson
63370	M	NS	Halifax	West Dover	28 Jun 1955	Ferguson
63359	M	NS	Kings	Aylesford	29 Jun 1962	Ferguson
63362	M	NS	Kings	cattail swamp near Aylesford	20 Jun 1963	Ferguson
63351	F	NS	Kings	Top of North Mt, near Garland	11 Jun 1954	Ferguson
63347	F	NS	Lunen	Green Bay	1 Jul 1956	Ferguson
63350	F	NS	Queens	Lake Kejimukujik	17 Jun 1957	Ferguson
63363	M	NS	Queens	Lake Kejimukujik	3 Jul 1968	Ferguson
63365	M	NS	Queens	Lake Kejimukujik	17 Jun 1957	Ferguson
63367	M	NS	Queens	Lake Kejimukujik	27 May 1958	Ferguson
63671	M	NS	Yarmouth	Argyle	7 Jun 1954	Ferguson
63324	F	NY				
63328	F	NY				
63329	F	NY				

Appendix 1. Continued.

Bar Code	Sex	State	County	Locality	Date	Collection
63336	M	NY		Centre	21 May 1877	Hill
63342	M	NY		Allegany State Park	9 to 40	Shadle
63332	M	NY	Allegany		Jun	Howard
63322	F	NY	Cattaraugus	2,500 ft	Jun	Howard
63335	M	NY	Greene	2,500 ft		
63334	M	NY	Greene	Brooklyn	20 Jun 1901	
63330	M	NY	Kings	Brooklyn	18 Jun 1902	
63333	M	NY	Kings		6 5 00	
63326	F	NY	Kings	E. NY	6 5 01	Weeks
63338	M	NY	Kings	E. NY		
63319	F	NY	Kings	E. NY, Long Island	22 May 1902	Weeks
63323	F	NY	Kings	East NY	6 5 00	
63320	F	NY	Kings	East NY, Long Island	14 May 1902	
63337	M	NY	Queens	Woodhaven, Long Island		
63327	F	NY	Suffolk	Amagansett, Long Island	30 May 1913	Engelhardt
63318	F	NY	Suffolk	Eatons Neck, Long Island	10 Jun 1971	Jackh
63321	F	NY	Suffolk	Penniquit Barrens, Coram, Long Island	20 Aug 1920	
63331	M	NY	Sullivan	Debruce	9 Jul 1916	
63339	M	NY	Tompkins	Ithaca	22 May 1965	Ferguson
63340	M	NY	Tompkins	Ithaca	22 May 1965	Ferguson
63325	F	NY	Tompkins	McLean Bogs Reserve	15 Jun 1957	Davis
63341	M	NY	Greene	2,500 ft		Howard
64118	F	OH	Athens	Waterloo Twp. Sec. 33 at a beaver dam	23 May 1981	Metzler
63387	M	OH	Lucas	Holland	10 May 1936	Rawson
63399	M	ON		Hymers	1-7 Aug	
63405	F	PA	Beaver	New Bighton	1 Jun 1902	Merrick
63406	F	PA	Beaver	New Bighton	31 May 1902	Merrick
63408	F	PA	Beaver	New Bighton	25 May 1902	Merrick
63400	M	PA	Beaver	New Bighton	11 Jun 1901	Merrick
63401	M	PA	Beaver	New Bighton	2 Jun 1918	Merrick
63402	M	PA	Beaver	New Bighton	1 Jun 1902	Merrick
63403	M	PA	Beaver	New Bighton	1 Jun 1902	Merrick
63407	F	PA	Centre	Howard	31 May 1979	Haas
63404	M	PA	Lancaster	Lititz	Aug 1924	Heiserman
63153	M	PL	Duval	St Johns Bluff	20 Apr 1962	Ferguson
63140	F	SC	Charleston	Charleston	28 Apr 1962	Ferguson

Appendix 1. Continued.

Bar Code	Sex	State	County	Locality	Date	Collection
63409	F	SC	Charleston	Wedge Plantation, McClellanville	26 Apr 1980	Ferguson
63410	F	SC	Charleston	Wedge Plantation, McClellanville	26 Apr 1980	Ferguson
63412	M	SC	Charleston	Wedge Plantation, McClellanville	26 Apr 1980	Ferguson
63413	M	SC	Charleston	Wedge Plantation, McClellanville	26 Apr 1980	Ferguson
63415	M	SC	Charleston	Wedge Plantation, McClellanville	26 Apr 1980	Ferguson
63411	F	SC	Horry	Myrtle Beach	21 Sep 1940	McElvare
63416	F	SC	Horry	Myrtle Beach	30 Sep 1953	
63414	M	SC	Horry	Myrtle Beach	28 Sep 1954	McEvans
64295	M	SC	Greenville	Greenville	18 Aug 1984	Peigler
63425	M	SD	Lawrence	Cheyenne Crossing, 5.600'	1 Jul 1997	Rahn
63431	F	SD	Pennington	Hill City	5 Jul 1964	Ferguson
63423	M	SD	Pennington	Hill City	5 Jul 1964	Ferguson
63426	F	SD	Pennington	Slate Cr, 9 mi NW of Hill City, Black Hills	4 Jul 1964	Ferguson
63427	F	SD	Pennington	Slate Cr, 9 mi NW of Hill City, Black Hills	4 Jul 1964	Ferguson
63420	M	SD	Pennington	Slate Cr, 9 mi NW of Hill City, Black Hills	4 Jul 198/64	Ferguson
63428	F	SD	Pennington	Upper Spring Cr, near Hill City, Black Hills	27 Jun 1964	Ferguson
63429	F	SD	Pennington	Upper Spring Cr, near Hill City, Black Hills	27 Jun 1964	Ferguson
63430	F	SD	Pennington	Upper Spring Cr, near Hill City, Black Hills	28 Jun 1964	Ferguson
63432	F	SD	Pennington	Upper Spring Cr, near Hill City, Black Hills	27 Jun 1964	Ferguson
63433	F	SD	Pennington	Upper Spring Cr, near Hill City, Black Hills	28 Jun 1964	Ferguson
63434	F	SD	Pennington	Upper Spring Cr, near Hill City, Black Hills	27 Jun 1964	Ferguson
63417	M	SD	Pennington	Upper Spring Cr, near Hill City, Black Hills	27 Jun 1984	Ferguson
63418	M	SD	Pennington	Upper Spring Cr, near Hill City, Black Hills	27 Jun 1984	Ferguson
63421	M	SD	Pennington	Upper Spring Cr, near Hill City, Black Hills	28 Jun 1964	Ferguson
63422	M	SD	Pennington	Upper Spring Cr, near Hill City, Black Hills	28 Jun 1964	Ferguson
63424	M	SD	Pennington	Upper Spring Cr, near Hill City, Black Hills	28 Jun 1964	Ferguson
63591	M	SD	Pennington	Upper Spring Cr, near Hill City, Black Hills	28 Jun 1964	Ferguson
63589	F	SD	Pennington	Upper Spring Cr, near Hill City, Black Hills	28 Jun 1964	Ferguson
63419	M	SD	Pennington	Upper Spring Cr, near Hill City, Black Hills	27 Jun 1964	Ferguson
63467	F	TX		Black Jack Spgs	28 Jun 1984	Graef
63510	F	TX				
63519	F	TX				
63444	M	TX				
63445	M	TX				
63478	M	TX				
63448	M	TX				

Appendix 1. Continued.

Bar Code	Sex	State	County	Locality	Date	Collection
63506	F	TX	Anderson	Tennessee Colony	12 Mar 1966	Blanchard
63513	F	TX	Anderson	Tennessee Colony	5 Mar 1967	Blanchard
63484	M	TX	Anderson	Tennessee Colony	5 Mar 1967	Blanchard
63505	F	TX	Bastrop	Bastrop State Park	28 Feb 1965	Blanchard
63479	M	TX	Bastrop	Bastrop State Park	27 Feb 1965	Blanchard
63482	M	TX	Bastrop	Bastrop State Park	28 Feb 1965	Blanchard
63500	M	TX	Bastrop	Belfrage		
63486	M	TX	Blanco	Pedernales Falls State Park	4 May 1973	Blanchard
63456	F	TX	Bosque	Laguna Park	24 Sep 1970	Blanchard
63457	F	TX	Bosque	Laguna Park	24 Sep 1970	Blanchard
63466	F	TX	Bosque	Laguna Park	24 Sep 1970	Blanchard
63439	M	TX	Bosque	Laguna Park	24 Sep 1970	Blanchard
63437	M	TX	Bosque	Laguna Park	24 Sep 1970	Blanchard
63447	M	TX	Bosque	Laguna Park	24 Sep 1970	Blanchard
63451	M	TX	Bowie	10 mi NW New Boston	18 Sep 1972	Todd
63453	M	TX	Bowie	5 mi N New Boston	17 Sep 1972	Todd
63532	F	TX	Brazos	College Station	Jun	Glick
63533	F	TX	Brazos	College Station	Aug 10-17	
63535	F	TX	Brazos	College Station	Sep	
63455	F	TX	Brown	Lake Brownwood State Park	7 Sep 1963	Blanchard
63436	M	TX	Brown	Lake Brownwood State Park	7 Sep 1963	Blanchard
63477	M	TX	Cameron	Brownsville	16 Mar 1923	
63480	M	TX	Cameron	Brownsville	Mar 1-7	
63481	M	TX	Cameron	Brownsville	Mar 16-23	
63492	M	TX	Cameron	Brownsville	Mar 16-23	
63501	M	TX	Cameron	Brownsville	Mar 8-15	
63483	M	TX	Comal	Guadalupe River nr New Braunfels	12 Mar 1972	Blanchard
63516	F	TX	Dallas	Dallas		
63534	F	TX	Dallas	Irving	10 Jun 1980	
64113	F	TX	Dallas	vic. Irving	20 Sep 1981	Rahn
64114	F	TX	Dallas	vic. Irving	20 Sep 1981	Rahn
63537	F	TX	Dallas	vic. Irving	14 Apr 1981	
64112	M	TX	Dallas	vic. Irving	20 Sep 1981	Rahn
63538	M	TX	Dallas	vic. Irving	29 Mar 1997	
63463	F	TX	Harris	Houston		Doll
63485	M	TX	Harris	Spring	9 Mar 1965	Blanchard

Appendix 1. Continued.

Bar Code	Sex	State	County	Locality	Date	Collection
63536	F	TX	Hays	Freeman Ranch, 6 km NW San Marcos	13 Mar 1995	Steiner, Swearingen, Ott, Silverfine Blanchard
63590	M	TX	Jasper	Town Bluff (Dam B)		
63454	F	TX	Kerr	Kerrville	10 Mar 1995	
63459	F	TX	Kerr	Kerrville		
63462	F	TX	Kerr	Kerrville		
63495	F	TX	Kerr	Kerrville	III 08	Lacy
63507	F	TX	Kerr	Kerrville		
63438	M	TX	Kerr	Kerrville	Sep 1902	Lacy
63440	M	TX	Kerr	Kerrville		
63441	M	TX	Kerr	Kerrville		
63442	M	TX	Kerr	Kerrville		
63443	M	TX	Kerr	Kerrville		
63446	M	TX	Kerr	Kerrville		
63458	F	TX	Kimble	Junction	18 Sep 1968	Blanchard
63468	F	TX	Kimble	Junction	17 Jun 1972	Ferguson
63540	F	TX	Kimble	Junction	18 Jun 1972	Ferguson
63541	F	TX	Kimble	Junction	18 Jun 1972	Ferguson
63542	F	TX	Kimble	Junction	16 Jun 1972	Ferguson
63539	M	TX	Kimble	Junction	18 Jun 1972	Ferguson
63528	F	TX	Lampasas	6.5 mi E Lampasas	12 Mar 1982	Poole
63472	F	TX	Lampasas	6.5 mi E Lampasas	12 Mar 1982	Poole
63473	F	TX	Lampasas	6.5 mi E Lampasas	12 Mar 1982	Poole
63474	F	TX	Lampasas	6.5 mi E Lampasas	12 Mar 1982	Poole
63475	F	TX	Lampasas	6.5 mi E Lampasas	12 Mar 1982	Poole
63476	F	TX	Lampasas	6.5 mi E Lampasas	12 Mar 1982	Poole
63504	F	TX	Lampasas	6.5 mi E Lampasas	12 Mar 1982	Poole
63508	F	TX	Lampasas	6.5 mi E Lampasas	12 Mar 1982	Poole
63512	F	TX	Lampasas	6.5 mi E Lampasas	12 Mar 1982	Poole
63514	F	TX	Lampasas	6.5 mi E Lampasas	12 Mar 1982	Poole
63515	F	TX	Lampasas	6.5 mi E Lampasas	12 Mar 1982	Poole
63517	F	TX	Lampasas	6.5 mi E Lampasas	12 Mar 1982	Poole
63518	F	TX	Lampasas	6.5 mi E Lampasas	12 Mar 1982	Poole
63520	F	TX	Lampasas	6.5 mi E Lampasas	12 Mar 1982	Poole
63522	F	TX	Lampasas	6.5 mi E Lampasas	12 Mar 1982	Poole
63523	F	TX	Lampasas	6.5 mi E Lampasas	12 Mar 1982	Poole

Appendix 1. Continued.

Bar Code	Sex	State	County	Locality	Date	Collection
63524	F	TX	Lampasas	6.5 mi E Lampasas	12 Mar 1982	Poole
63525	F	TX	Lampasas	6.5 mi E Lampasas	12 Mar 1982	Poole
63526	F	TX	Lampasas	6.5 mi E Lampasas	12 Mar 1982	Poole
63527	F	TX	Lampasas	6.5 mi E Lampasas	12 Mar 1982	Poole
63529	F	TX	Lampasas	6.5 mi E Lampasas	12 Mar 1982	Poole
63530	F	TX	Lampasas	6.5 mi E Lampasas	12 Mar 1982	Poole
63531	F	TX	Lampasas	6.5 mi E Lampasas	12 Mar 1982	Poole
63450	M	TX	Lampasas	6.5 mi E Lampasas	12 Mar 1982	Poole
63493	M	TX	Lampasas	6.5 mi E Lampasas	12 Mar 1982	Poole
63496	M	TX	Lampasas	6.5 mi E Lampasas	12 Mar 1982	Poole
63497	M	TX	Lampasas	6.5 mi E Lampasas	12 Mar 1982	Poole
63499	M	TX	Lampasas	6.5 mi E Lampasas	12 Mar 1982	Poole
63502	M	TX	Lampasas	6.5 mi E Lampasas	12 Mar 1982	Poole
63503	M	TX	Lampasas	6.5 mi E Lampasas	12 Mar 1982	Poole
63487	M	TX	Lampasas	6.5 mi E Lampasas	12 Mar 1982	Poole
63509	F	TX	San Saba	Bend	11 Mar 1982	Poole
63521	F	TX	San Saba	Bend	11 Mar 1982	Poole
63452	M	TX	San Saba	Bend	11 Mar 1982	Poole
63488	M	TX	San Saba	Bend	11 Mar 1982	Poole
63489	M	TX	San Saba	Bend	11 Mar 1982	Poole
63490	M	TX	San Saba	Bend	11 Mar 1982	Poole
63498	M	TX	San Saba	Bend	11 Mar 1982	Poole
63469	F	TX	St Augustine	2 mi SW Broadus Lake Sam Rayburn	20 Sep 1972	Todd
63470	F	TX	St Augustine	2 mi SW Broadus Lake Sam Rayburn	20 Sep 1972	Todd
63471	F	TX	St Augustine	2 mi SW Broadus Lake Sam Rayburn	20 Sep 1972	Todd
63449	M	TX	St Augustine	2 mi SW Broadus Lake Sam Rayburn	20 Sep 1972	Todd
63460	F	TX	Tarrant	Fort Worth	30 Sep 1963	E Jackh Jr.
63461	F	TX	Tarrant	Fort Worth	30 Sep 1963	E Jackh Jr.
63464	F	TX	Tarrant	Fort Worth	30 Sep 1963	E Jackh Jr.
63465	F	TX	Tarrant	Fort Worth	9 Sep 1963	E Jackh Jr.
63587	F	TX	Travis	Bee Cave	14 Apr 1964	Blanchard
63491	M	TX	Travis	Bee Cave	14 Apr 1964	Blanchard
63511	F	TX	Uvalde	Sabinal	Mar 1910	Pratt
63494	M	TX	Uvalde	Sabinal	10 Mar 1910	Pratt
63547	M	VA				
63548	F	VA	Bath	2.6 mi E of Warm Springs	8 Jun 1969	Hevel

Appendix 1. Continued.

Bar Code	Sex	State	County	Locality	Date	Collection
63546	M	VA	Fairfax	Alexandria (Rose Hill)	24 Jul 1976	Opler
63544	M	VA	Nansemond	Seashore St Pk	1-4 Jun 1975	Davis
63545	M	VA	Nansemond	Seashore St Pk	1-4 Jun 1975	Davis
63543	M	VA	Nansemond	Seashore St Pk	1-4 Jun 1975	Davis
63584	F	WI	Marathon	Township of Stettin	27 Jun 1975	Rahn
63585	M	WI	Marathon	Township of Stettin	4 Jun 1975	Rahn
63583	M	WV	Hardy	near Lost River State Park	4-6 Jul 1980	Miller
63598	F	WV	Morgan	4 mi SW Grand Cacapon	19 Aug 1989	Clarke, McIntyre
63549	F	WV	Tucker	Blackwater Falls State Park	23 Jun 1968	Clarke
63550	F	WV	Tucker	Blackwater Falls State Park	24 Jun 1968	Clarke
63551	F	WV	Tucker	Blackwater Falls State Park	24 Jun 1968	Clarke
63552	F	WV	Tucker	Blackwater Falls State Park	24 Jun 1968	Clarke
63553	F	WV	Tucker	Blackwater Falls State Park	24 Jun 1968	Clarke
63554	F	WV	Tucker	Blackwater Falls State Park	24 Jun 1968	Clarke
63555	F	WV	Tucker	Blackwater Falls State Park	23 Jun 1968	Clarke
63556	F	WV	Tucker	Blackwater Falls State Park	24 Jun 1968	Clarke
63557	F	WV	Tucker	Blackwater Falls State Park	23 Jun 1968	Clarke
63558	F	WV	Tucker	Blackwater Falls State Park	24 Jun 1968	Clarke
63559	F	WV	Tucker	Blackwater Falls State Park	23 Jun 1968	Clarke
63560	F	WV	Tucker	Blackwater Falls State Park	24 Jun 1968	Clarke
63561	F	WV	Tucker	Blackwater Falls State Park	23 Jun 1968	Clarke
63562	F	WV	Tucker	Blackwater Falls State Park	24 Jun 1968	Clarke
63563	F	WV	Tucker	Blackwater Falls State Park	23 Jun 1968	Clarke
63564	F	WV	Tucker	Blackwater Falls State Park	24 Jun 1968	Clarke
63565	F	WV	Tucker	Blackwater Falls State Park	23 Jun 1968	Clarke
63566	F	WV	Tucker	Blackwater Falls State Park	24 Jun 1968	Clarke
63567	F	WV	Tucker	Blackwater Falls State Park	23 Jun 1968	Clarke
63568	F	WV	Tucker	Blackwater Falls State Park	24 Jun 1968	Clarke
63569	F	WV	Tucker	Blackwater Falls State Park	24 Jun 1968	Clarke
63570	F	WV	Tucker	Blackwater Falls State Park	24 Jun 1968	Clarke
63571	F	WV	Tucker	Blackwater Falls State Park	24 Jun 1968	Clarke
63572	F	WV	Tucker	Blackwater Falls State Park	24 Jun 1968	Clarke
63573	F	WV	Tucker	Blackwater Falls State Park	24 Jun 1968	Clarke
63574	F	WV	Tucker	Blackwater Falls State Park	24 Jun 1968	Clarke

Appendix 1. Continued.

Bar Code	Sex	State	County	Locality	Date	Collection
63575	F	WV	Tucker	Blackwater Falls State Park	24 Jun 1968	Clarke
63576	F	WV	Tucker	Blackwater Falls State Park	24 Jun 1968	Clarke
63577	F	WV	Tucker	Blackwater Falls State Park	24 Jun 1968	Clarke
63597	F	WV	Tucker	Blackwater Falls State Park	24 Jun 1968	Clarke
63599	F	WV	Tucker	Blackwater Falls State Park	24 Jun 1968	Clarke
63578	M	WV	Tucker	Blackwater Falls State Park	24 Jun 1968	Clarke
63579	M	WV	Tucker	Blackwater Falls State Park	24 Jun 1968	Clarke
63580	M	WV	Tucker	Blackwater Falls State Park	24 Jun 1968	Clarke
63581	M	WV	Tucker	Blackwater Falls State Park	23 Jun 1968	Clarke
63582	M	WV	Tucker	Blackwater Falls State Park	24 Jun 1968	Clarke

Appendix 2. *Elaphria festivoideus* genitalia slides.

Bar Code	Sex	Genitalia Slide #	State	County	Locality	Museum
63067	M	JGF 1764	BC		Kaslo Cr	NMNH
63593	F	USNM 26248	CT	New Haven	Yale Preserve, New Haven	NMNH
63586	M	USNM 46247	CT	New Haven	Yale Preserve, New Haven	NMNH
63128	F	JGF 1757	FL			NMNH
63596	M	USNM 46243	FL	Putnam	University Reserve, Welaka	NMNH
63594	F	USNM 46244	FL	Putnam	University Reserve, Welaka	NMNH
63154	F	JGF 1754	GA	Fulton	Atlanta	NMNH
63166	M	USNM 46260	KS	Crawford	4 mi E Pittsburg	NMNH
63230	M	USNM 46267	MD	Prince George's	Patuxent Natl Wildlife Research Center	NMNH
63202	M	USNM 46253	ME	Penobscot	Passadumkeag	NMNH
63595	M	USNM 46254	MI	Crawford	11 mi W of Roscommon	NMNH
63252	M	USNM 46252	MI	Oakland	Franklin	NMNH
63588	M	USNM 46251	MO	Benton	Warsaw	NMNH
63711	F	MGP #1115	MS	Okribbeha	6 mi SW Starkville	MSU
63277	M	USNM 46311	NF	W. Newfoundland	South Branch	NMNH
63305	F	USNM 46271	NJ	Ocean	Wrangle Brook Rd, Lakehurst	NMNH
63592	M	USNM 46250	NJ	Ocean	Wrangle Brook Rd, Lakehurst	NMNH
63296	F	USNM 46268	NJ	Ocean	Wrangle Brook Rd, Lakehurst	NMNH
63317	M	USNM 46255	NM	San Miguel	Las Vegas	NMNH
63361	M	JGF 1762	NS		Digby	NMNH
63352	F	JGF 1763	NS		Digby	NMNH
63372	M	USNM 46259	NS	Halifax	Halifax watershed Area	NMNH
63366	M	USNM 46258	NS	Halifax	West Dover	NMNH
63329	F	JGF 1756	NY			NMNH
63332	M	JGF 1755	NY	Allegany	Centre	NMNH
63330	M	USNM 46265	NY	Kings	Brooklyn	NMNH
63404	M	JGF 1765	PA	Lancaster	Littiz	NMNH
63415	M	USNM 46261	SC	Charleston	Wedge Plantation, McClellanville	NMNH
63591	M	USNM 46245	SD	Pennington	Upper Spring Cr, near Hill City, Black Hills	NMNH
63589	F	USNM 46246	SD	Pennington	Upper Spring Creek near Hill City, Black Hills	NMNH

Appendix 2. Continued.

Bar Code	Sex	Genitalia Slide #	State	County	Locality	Museum
63478	M	JGF 1758	TX			NMNH
63479	M	AB 666	TX	Bastrop	Bastrop State Park	NMNH
63590	M	USNM 46239	TX	Jasper	Town Bluff (Dam B)	NMNH
63495	F	JGF 1759	TX	Kerr	Kerrville	NMNH
63438	M	JGF 1760	TX	Kerr	Kerrville	NMNH
63454	F	JGF 1761	TX	Kerr	Kerrville	NMNH
63441	M	USNM 46264	TX	Kerr	Kerrville	NMNH
63487	M	USNM 46263	TX	Lapasas	6.5 mi E Lampasas	NMNH
63587	F	USNM 46240	TX	Travis	Bee Cave	NMNH
63582	M	USNM 46262	WV	Tucker	Blackwater Falls St Pk	NMNH
63551	F	USNM 46272	WV	Tucker	Blackwater Falls St Pk	NMNH

Appendix 3. *Elaphria cornutinis* material examined, 38 ♂ and 69 ♀.

Bar Code	Sex	State	County	Locality	Date	Collector	Museum
63612	M	AL	Monroe	1 mi S, Claiborne Dam	30 May 1995	Brown and MacGown	MSU
63062	F	AR	Washington	Beaver Lake	2 May 1970	Heitzman	NMNH
63063	F	AR	Washington	Beaver Lake	2 May 1970	Heitzman	NMNH
63064	M	AR	Washington	Beaver Lake	2 May 1970	Heitzman	NMNH
63066	F	AR	Washington	Devel's Den St Pk	4 July 1966	Hodges	NMNH
63065	M	AR	Washington	Devel's Den St Pk	28 June 1966	Todd	NMNH
63171	M	KY	Metcalfe	Hwy 218 N Center	25 Apr 1994	Cool	NMNH
63170	M	KY	Metcalfe	Hwy 218 N Center	6 May 1994	Cook	NMNH
63169	M	KY	Metcalfe	Hwy 218 N Center	25 Apr 1994	Cook	NMNH
63214	F	MD	Anne Arundel	Southaven	16 Apr 1990	Stevenson	NMNH
63217	F	MD	Anne Arundel	Southaven, UU61 UV mixed woods	7 May 1987	Stevenson	NMNH
63220	F	MD	Anne Arundel	Southaven, UU61-UV mixed woods	12 May 1987	Stevenson	NMNH
63221	F	MD	Anne Arundel	Southaven, UU61-UV mixed woods	7 May 1987	Stevenson	NMNH
63212	F	MD	Montgomery	Colesville	13 Aug 1967	Ferguson	NMNH
63216	F	MD	Montgomery	Colesville	30 Jul 1984	Ferguson	NMNH
63231	M	MD	Montgomery	Plummers I	16 May	Busck	NMNH
63215	F	MD	Montgomery	Seneca	10 Apr 1985	Ferguson	NMNH
63229	M	MD	Montgomery	Sycamore Landing, Seneca	17 May 1977	Ferguson	NMNH
63228	F	MD	Prince Georges		11 Aug 1978	Reinert	NMNH
63227	F	MD	Prince Georges		3 Jun 1978	Reinert	NMNH
63223	F	MD	Prince Georges	Beltsville	27 Jul 1985	Ferguson	NMNH
63218	F	MD	Prince Georges	Beltsville	7 May 1973	Ferguson	NMNH
63233	F	MD	Talbot	Wittman	2 Aug 1986	Steiner, Hill, Swearingen	NMNH
63236	F	MD	Wicomico	1 km SW Sharptown at Plum Creek	23 Jul 1986	Hill & Steiner	NMNH
63232	M	MD	Wicomico	1 km SW Sharptown at Plum Creek	23 Jul 1986	Hill & Steiner	NMNH
64306	F	MO	Benton	3 miles NW of Warsaw	20 Jun 1974	Heitzman	AMNH
64303	F	MO	Benton	near Warsaw			AMNH
64304	F	MO	Laclede	3 miles SE of Stoutland	2 Aug 1975	Heitzman	AMNH
64305	F	MO	Laclede	3 miles SE of Stoutland	2 Aug 1975	Heitzman	AMNH
63603	F	MS	Granada	T21N, R2E, Sec 12, 13N & R3E, sec. 7S, 18N	5-11 Jun 1991	Brown	MSU
64293	M	MS	Hinds	Clinton	19 Mar 1982	Mather	AMNH
64296	M	MS	Hinds	Jackson	31 Aug 1963	Roshore	AMNH
64309	F	MS	Hinds	Jackson	29 Aug 1970	Mather	AMNH
63601	F	MS	Holmes	Holmes Co. State Park	8-9 Jun 1994	Brown	MSU
63610	M	MS	Lee	Tombigbee State Park	5-6 Jun 1995	Brown	MSU
64271	M	MS	Lee	Tombigbee State Park	14 Aug-3 Sep 1993	Kergosien	BM

Appendix 3. Continued.

Bar Code	Sex	State	County	Locality	Date	Collector	Museum
64280	F	MS	Lee	Tombigbee State Park	1-23 Apr 1993	Kergosien	BM
64276	M	MS	Lee	Tombigbee State Park	1-23 Apr 1993	Kergosien	BM
64273	M	MS	Lee	Tombigbee State Park	14 Aug-3 Sep 1993	Kergosien	BM
64275	M	MS	Lee	Tombigbee State Park	15-24 Jun 1994	Kergosien	BM
64278	F	MS	Lee	Tombigbee State Park	19-30 Jun 1993	Kergosien	BM
64272	M	MS	Lee	Tombigbee State Park	9-19 Jul 1994	Kergosien	BM
64279	F	MS	Lee	Tombigbee State Park	1-23 Apr 1993	Kergosien	BM
64281	F	MS	Lee	Tombigbee State Park	1-23 Apr 1993	Kergosien	BM
64274	M	MS	Lee	Tombigbee State Park	1-23 Apr 1993	Kergosien	BM
64282	F	MS	Lee	Tombigbee State Park	24 Apr-7 May 1993	Kergosien	BM
64289	M	MS	Lee	Tombigbee State Park	12-17 Aug 1994	Kergosien	AMNH
64290	M	MS	Lee	Tombigbee State Park	28 May-9 Jun 1994	Kergosien	AMNH
64291	M	MS	Lee	Tombigbee State Park	3-23 Sep 1995	Kergosien	AMNH
64292	M	MS	Lee	Tombigbee State Park	5 Aug 1992	Kergosien	AMNH
64297	M	MS	Lee	Tombigbee State Park	15-24 Jun 1994	Kergosien	AMNH
64298	M	MS	Lee	Tombigbee State Park	19-30 Jun 1993	Kergosien	AMNH
64299	M	MS	Lee	Tombigbee State Park	8-30 Apr 1994	Kergosien	AMNH
64300	M	MS	Lee	Tombigbee State Park	8-30 Apr 1994	Kergosien	AMNH
64301	M	MS	Lee	Tombigbee State Park	1-23 Apr 1993	Kergosien	AMNH
64315	F	MS	Lee	Tombigbee State Park	1-23 Apr 1993	Kergosien	AMNH
64316	F	MS	Lee	Tombigbee State Park	1-23 Apr 1993	Kergosien	AMNH
64317	F	MS	Lee	Tombigbee State Park	1-23 Apr 1993	Kergosien	AMNH
64318	F	MS	Lee	Tombigbee State Park	1-23 Apr 1993	Kergosien	AMNH
64319	F	MS	Lee	Tombigbee State Park	1-23 Apr 1993	Kergosien	AMNH
64320	F	MS	Lee	Tombigbee State Park	1-8 Aug 1994	Kergosien	AMNH
64321	F	MS	Lee	Tombigbee State Park	1-14 Jun 1994	Kergosien	AMNH
64322	F	MS	Lee	Tombigbee State Park	25 Jun-8 Jul 1994	Kergosien	AMNH
64323	F	MS	Lee	Tombigbee State Park	10-24 Jun 1995	Kergosien	AMNH
64324	F	MS	Lee	Tombigbee State Park	10-24 Jun 1995	Kergosien	AMNH
64325	F	MS	Lee	Tombigbee State Park	10-24 Jun 1995	Kergosien	AMNH
64326	F	MS	Lee	Tombigbee State Park	9-11 Aug 1994	Kergosien	AMNH
64327	F	MS	Lee	Tombigbee State Park	12-17 Aug 1994	Kergosien	AMNH
64277	F	MS	Lee	Tombigbee State Park	14 Aug-3 Sep 1993	Kergosien	AMNH
64357	F	MS	Lee	Tombigbee State Park	12-17 Aug 1994	Kergosien	AMNH
64358	F	MS	Lee	Tombigbee State Park	11 Mar-7 Apr 1995	Kergosien	BM
64359	F	MS	Lee	Tombigbee State Park	1-8 Aug 1994	Kergosien	AMNH
64360	F	MS	Lee	Tombigbee State Park	14 Aug-3 Sep 1993	Kergosien	AMNH
					8-30 Apr 1994	Kergosien	AMNH

Appendix 3. Continued.

Bar Code	Sex	State	County	Locality	Date	Collector	Museum
64361	F	MS	Lee	Tombigbee State Park	4-30 Sep 1993	Kergosien	AMNH
64362	F	MS	Lee	Tombigbee State Park	12-17 Aug 1994	Kergosien	AMNH
63607	M	MS	Lee	Tupelo	22 Aug 1969	Bryson	MSU
63604	M	MS	Oktoberha	A&M College	24 Aug 1931	Hutchins	MSU
63600	F	MS	Oktoberha	A&M College	26 Aug 1931	Hutchins	MUS
64307	F	MS	Oktoberha	A&M College	2 Mar 1932	Hutchins	AMNH
63611	M	MS	Oktoberha	Miss. St. Univ.	5 Jun 1968	Beyson	MSU
64308	F	MS	Oktoberha	Mississippi State University	9 Apr 1976	Bryson	AMNH
64302	F	MS	Tishomingo	J. P. Coleman State Park	14 Aug-25 Sep 1995	Kergosien	AMNH
64310	F	MS	Tishomingo	J. P. Coleman State Park	6 Aug 1992	Kergosien	AMNH
64311	F	MS	Tishomingo	J. P. Coleman State Park	3-23 Sep 1995	Kergosien	AMNH
64312	F	MS	Tishomingo	J. P. Coleman State Park	10-24 Jun 1995	Kergosien	AMNH
64313	F	MS	Tishomingo	J. P. Coleman State Park	14 Aug-3 Sep 1993	Kergosien	AMNH
64314	F	MS	Tishomingo	J. P. Coleman State Park	22 Jul-13 Aug 1995	Kergosien	AMNH
64363	F	MS	Tishomingo	J. P. Coleman State Park	8-30 Apr 1994	Kergosien	AMNH
64364	F	MS	Tishomingo	J. P. Coleman State Park	8-30 Apr 1994	Kergosien	AMNH
64365	F	MS	Tishomingo	J. P. Coleman State Park	8-30 Apr 1994	Kergosien	AMNH
64366	F	MS	Tishomingo	J. P. Coleman State Park	8-30 Apr 1994	Kergosien	AMNH
64410	F	MS	Tishomingo	J. P. Coleman State Park	8-30 Apr 1994	Kergosien	AMNH
64411	F	MS	Tishomingo	J. P. Coleman State Park	8-30 Apr 1994	Kergosien	AMNH
63606	M	MS	Tishomingo	J. P. Coleman State Park	18 Aug-4 Sep 1994	Kergosien	AMNH
63602	F	MS	Tishomingo	Tishomingo State Park	22 Oct-19 Nov 1994	Kergosien	AMNH
63609	M	MS	Tishomingo	Tishomingo State Park	11-12 Apr 1986	MacDonald	MSU
63608	M	MS	Webster	Tishomingo State Park	8-9 Apr 1988	Brown	MSU
63393	M	OK	Garfield	Tishomingo State Park	11-12 Apr 1986	MacDonald	MSU
63396	F	OK	Sequoyah	2 mi SE Cumberland, T20N, R12E, Sec. 17	12 Jun 1990	Pollock	MSU
63397	F	OK	Sequoyah	Lake Tenkiller 2 mi NW Blackgum	12 Jul 1977	Reinert	NMNH
63398	F	OK	Sequoyah	Lake Tenkiller 2 mi NW Blackgum	25-29 Aug 1982	Davis	NMNH
63397	F	OK	Sequoyah	Lake Tenkiller 2 mi NW Blackgum	25-29 Aug 1982	Davis	NMNH
63392	M	OK	Sequoyah	Lake Tenkiller 2 mi NW Blackgum	25-29 Aug 1982	Davis	NMNH
63394	M	OK	Sequoyah	Lake Tenkiller 2 mi NW Blackgum	25-29 Aug 1982	Davis	NMNH
63395	F	OK	Sequoyah	Lake Tenkiller 2 mi NW Blackgum	14-16 Jul 1983	Davis	NMNH
63389	F	OK	Sequoyah	Tenkiller Lake 3 mi W Blackgum	6-9 Jul 1979	Davis	NMNH
63388	M	OK	Sequoyah	Tenkiller Lake 3 mi W Blackgum	6-9 Jul 1979	Davis	NMNH
63390	F	OK	Sequoyah	Tenkiller Lake 3 mi W Blackgum	6-9 Jul 1979	Davis	NMNH
63391	F	OK	Sequoyah	Tenkiller Lake 3 mi W Blackgum	6-9 Jul 1979	Davis	NMNH
63435	F	TN	Marion	Monteagle, el. 2000	24 Jun 1930	Richards	NMNH

Appendix 4. *Elaphria cornutinis* genitalia slides.

Bar Code	Sex	Genitalia Slide #	State	County	Locality	Museum
63065	M	USNM 46249	AR	Washington	Devil's Den St Pk	NMNH
63169	M	USNM 46257	KY	Metcalf	Hwy 218, N Center	NMNH
63219	F	USNM 46270	MD	Anne Arundel	Southaven, UU61-UV mixed woods	NMNH
63213	F	USNM 46269	MD	Anne Arundel	Southaven, UV mixed woods	NMNH
63231	M	USNM 39745	MD	Montgomery	Plummers I	NMNH
63229	M	USNM 46256	MD	Montgomery	Sycamore Landing, Seneca	NMNH
64293	M	MGP #1121	MS	Hinds	Clinton	AMNH
64296	M	MGP #1120	MS	Hinds	Jackson	AMNH
64272	M	MGP #1113	MS	Lee	Tombigbee State Park	BM
64277	F	MGP #1114	MS	Lee	Tombigbee State Park	BM
64307	F	MGP #1122	MS	Oktibbeha	A&M College	AMNH
64308	F	MGP #1123	MS	Oktibbeha	Mississippi State University	AMNH
64302	F	MGP #1119	MS	Tishomingo	J. P. Coleman State Park	AMNH
63392	M	USNM 46241	OK	Sequoyah	Lake Tenkiller 2 mi NW Blackgum	NMNH
63391	F	USNM 46242	OK	Sequoyah	Tenkiller Lake, 3 mi W Blackgum	NMNH